

KEYNOTES

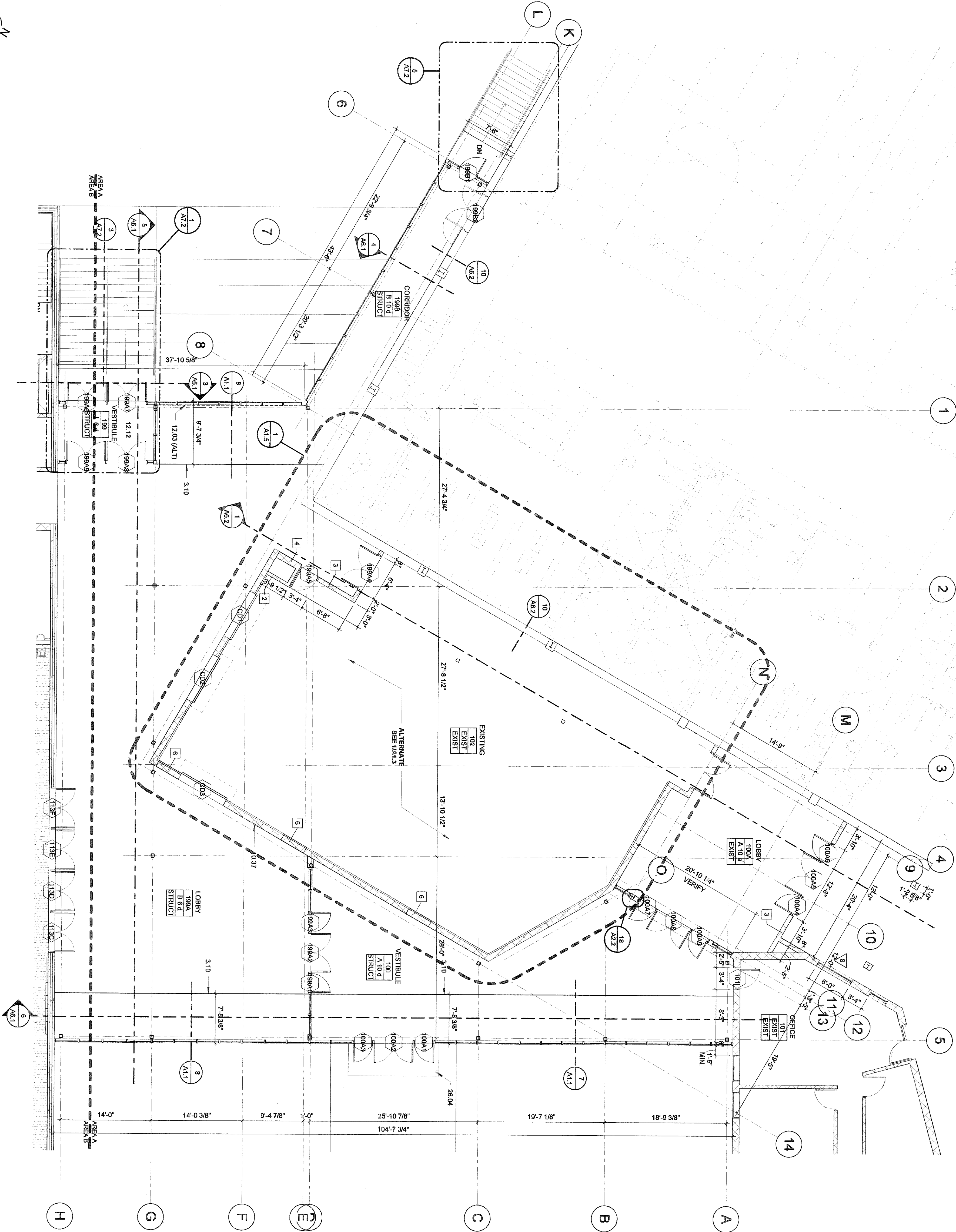
- DIVISION 3 - CONCRETE
3.10 CONCRETE SLAB
3.10 CONCRETE
DIVISION 4 - MASONRY
4.31 CMU
4.34 BOND BEAM w/2 #6 BARS
DIVISION 5 - METALS
5.13 ANGLE (SEE STRUCT.)
DIVISION 7 - THERMAL AND MOISTURE PROTECTION
7.25 GLASS UNFINISHED INSULATION
DIVISION 8 - FINISHES
8.01 GYPSUM WALLBOARD
8.27 HAT SHAPED FURNISH CHANNELS w/ F.O.C.
8.65 UNIT COMPOSITION TILE JOINT
DIVISION 10 - SPECIALTIES
10.37 FIRE EXTINGUISHER CABINET w/ F.E. - SEMI-CROSSCUT
DIVISION 12 - FINISHES
12.12 RECESSED FLOOR MAT
DIVISION 23 - HEATING, VENTILATION AND AIR CONDITIONING
23.10 INFLOOR HEATING (SEE MECH.)
DIVISION 26 - ELECTRICAL
26.04 ADA PUSH BUTTON & POST - SEE MECHANICAL
DIVISION 31 - PLASTERWORK
31.08 SUB-BASE MATERIAL

GENERAL NOTES

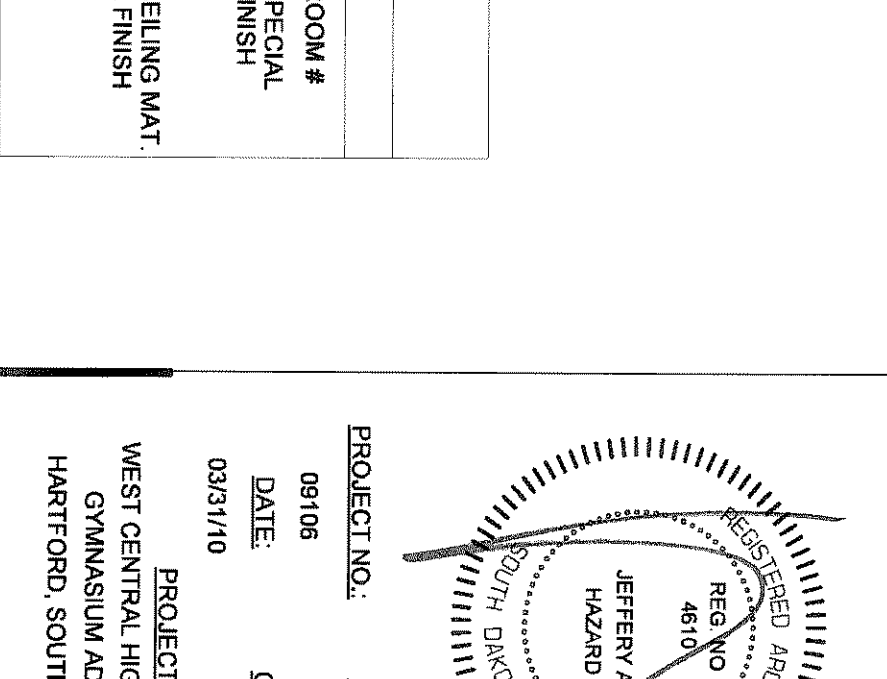
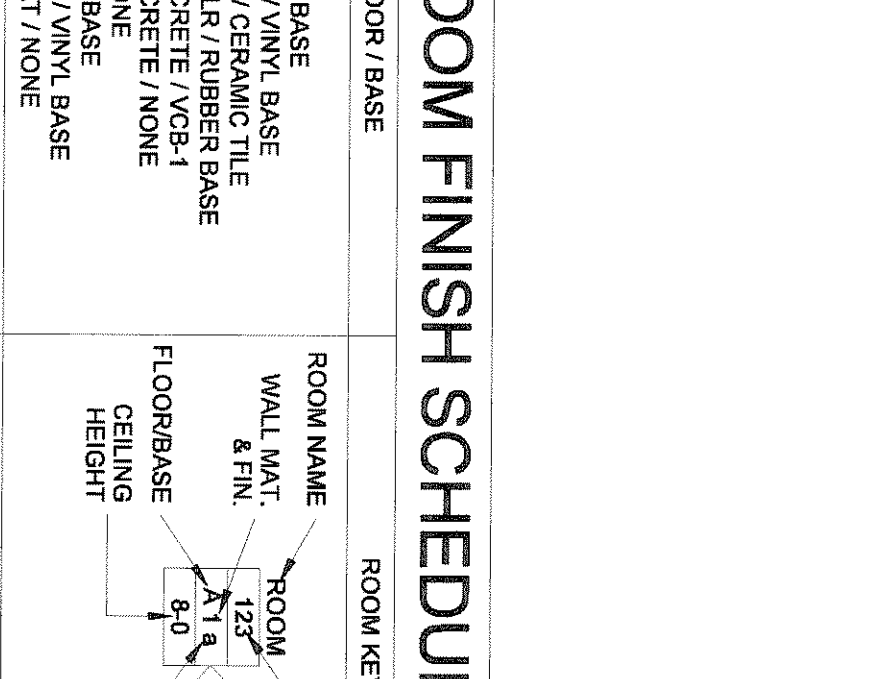
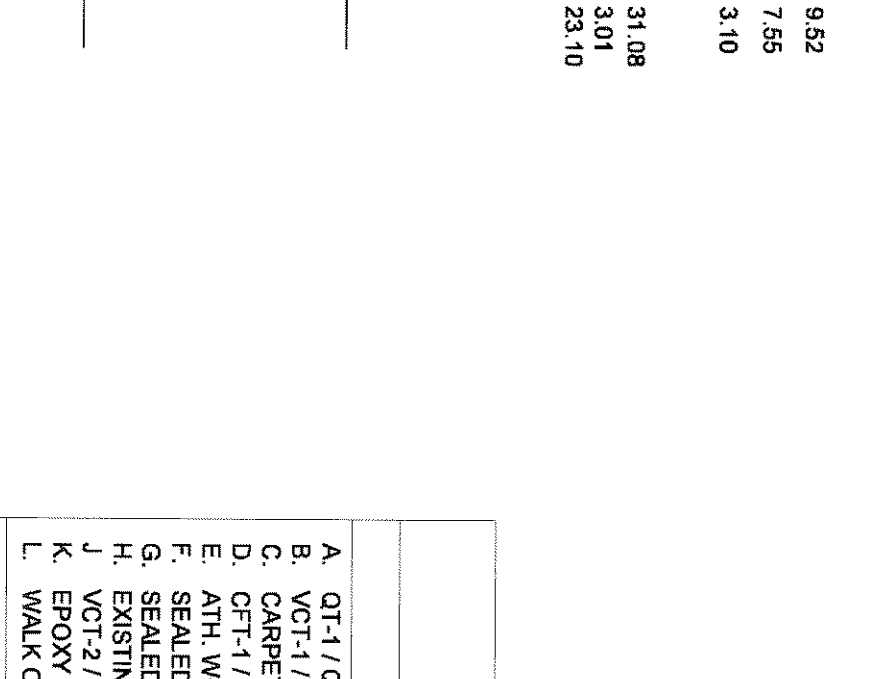
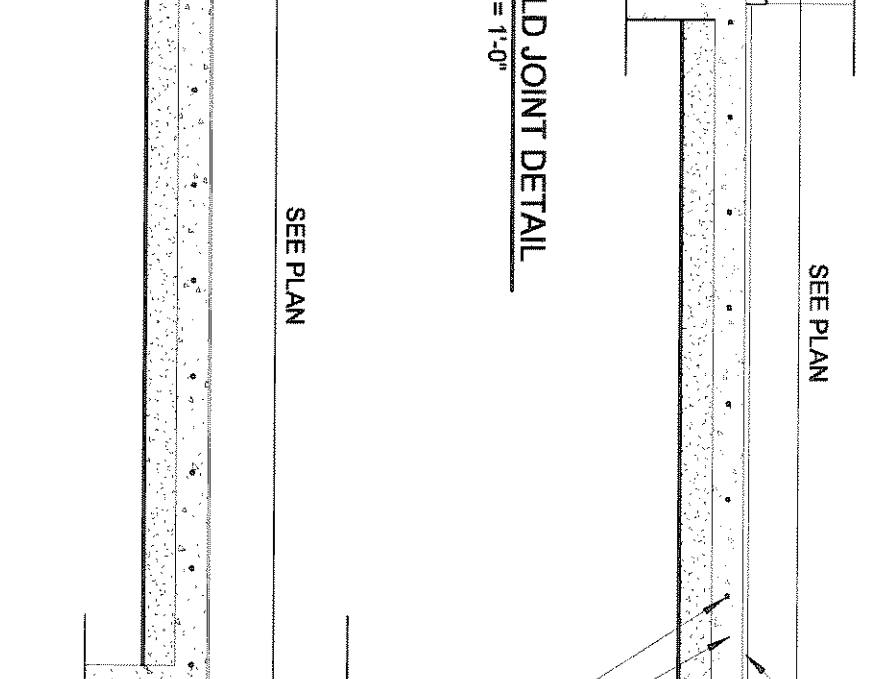
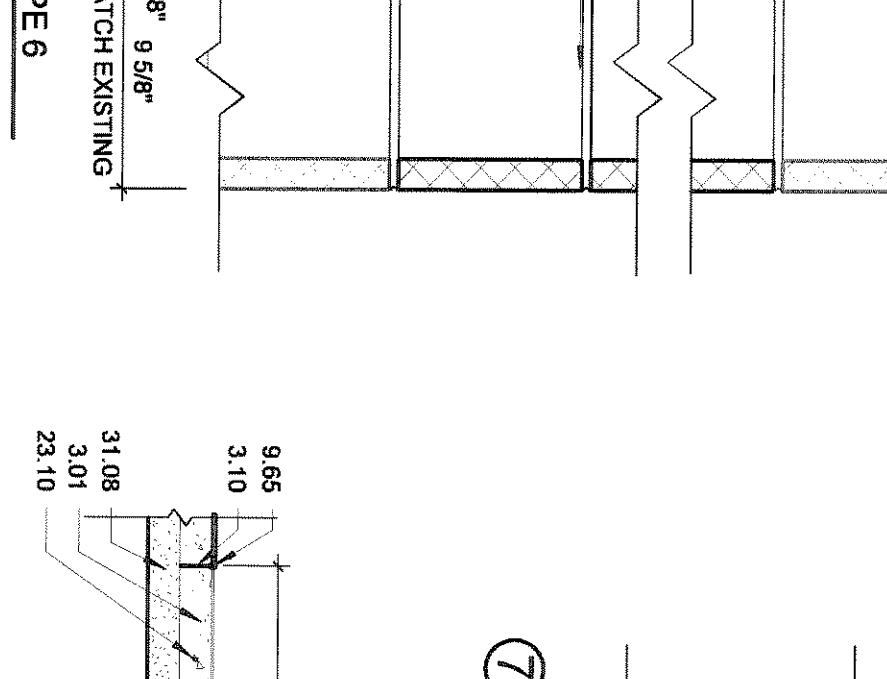
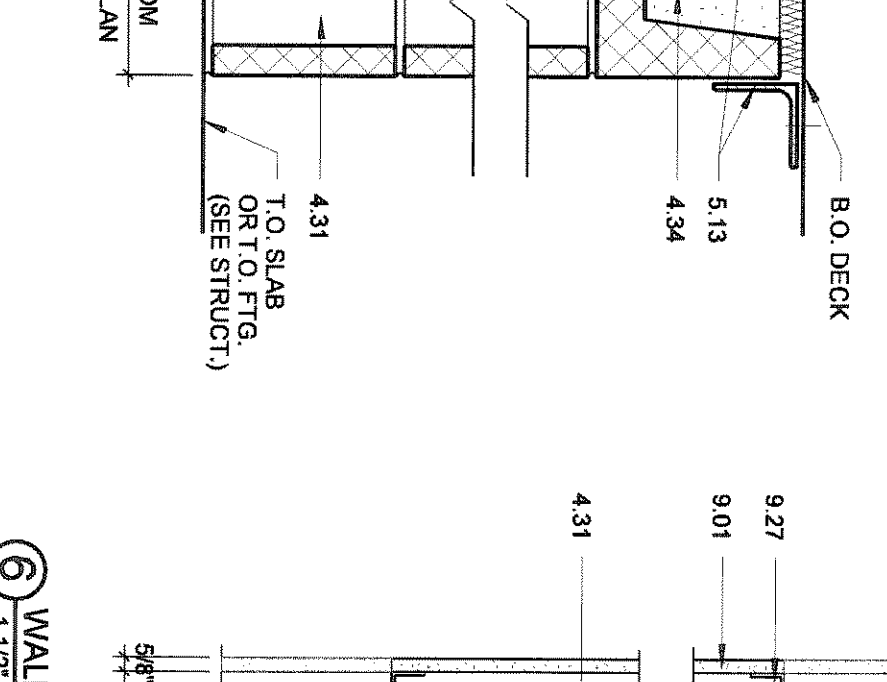
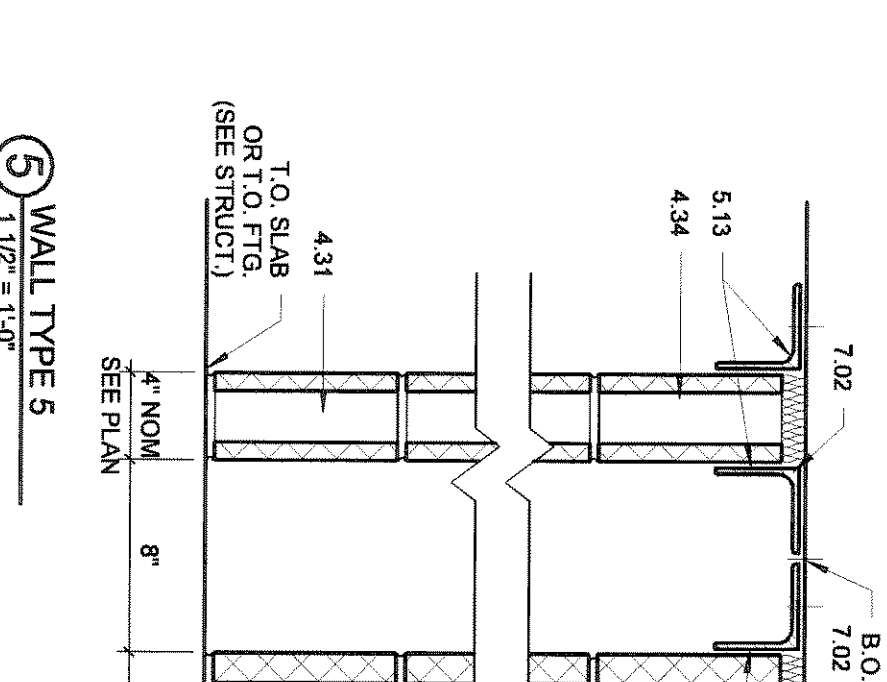
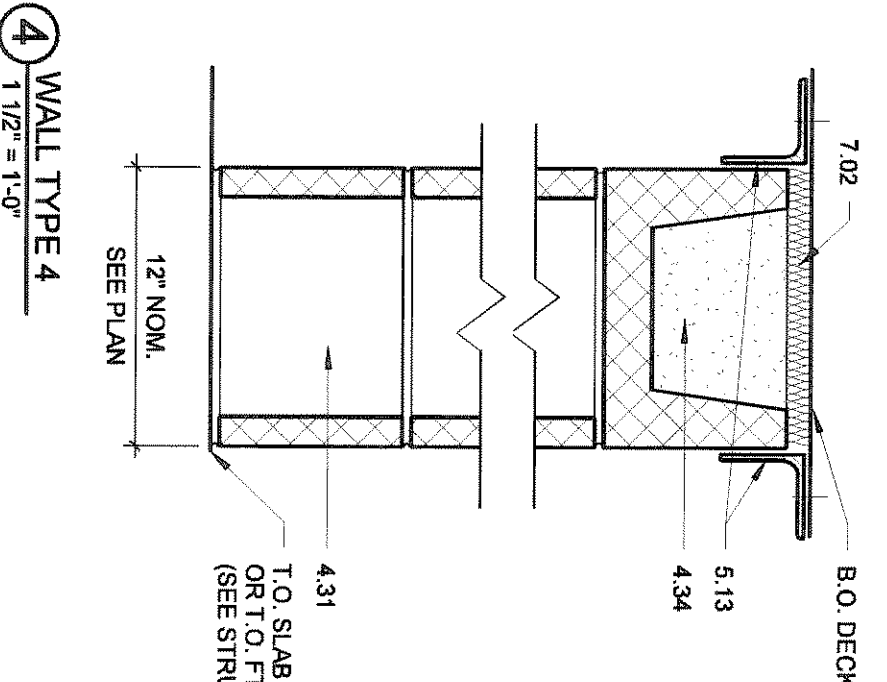
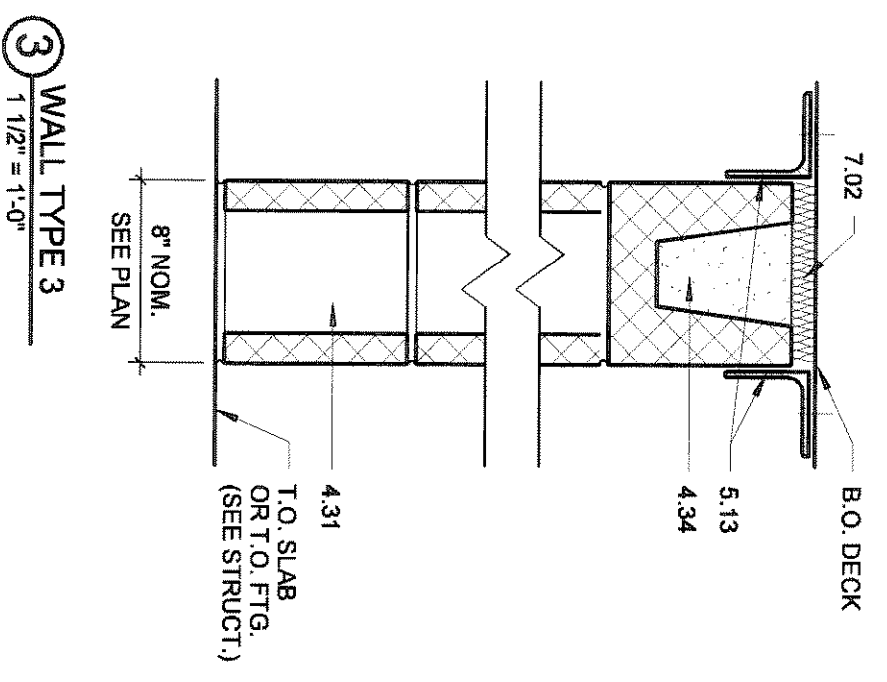
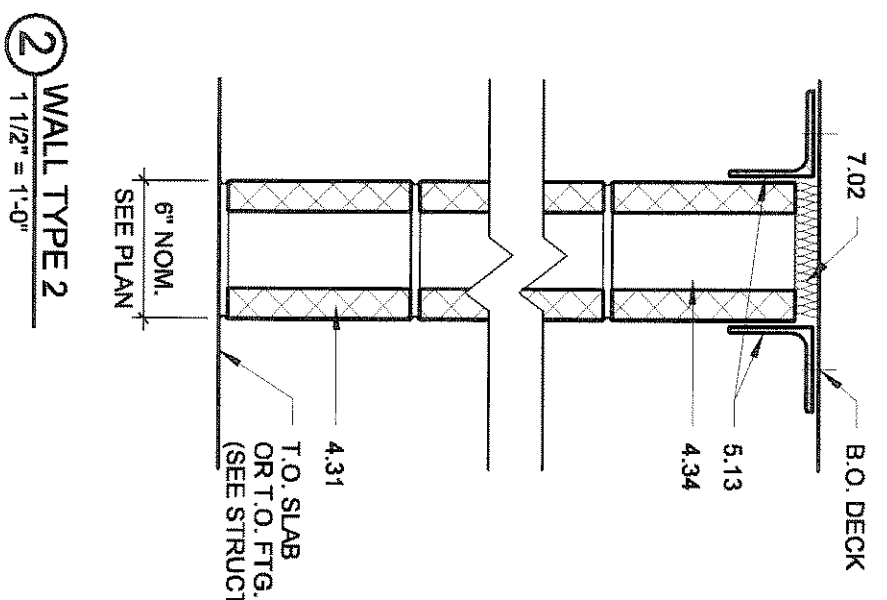
3. SEE WALL TYPES FOR RATED ASSEMBLIES.
4. SEE DOOR AND WINDOW SCHEDULE FOR RATED OPENINGS.
5. REFER TO SITE PLAN FOR PROPERTY LINES.
6. REFER TO SPECIFICATIONS FOR FIRE PROTECTION AND PAINTING OF EXPOSED COLUMN AND BEAM STRUCTURES.
7. CONTRACTOR TO VERIFY ALL EXISTING CONDITIONS, ELEVATIONS AND DIMENSIONS.
8. PROVIDE FOR AND VERIFY LOCATION, SIZE, AND QUANTITY OF ALL EQUIPMENT PANS SHOWN ON ELECTRICAL AND MECHANICAL DRAWINGS.
9. VERIFY ALL EXISTING CONDITIONS, ELEVATIONS, AND DETAILS.
10. VERIFY ALL EXISTING CONDITIONS, ELEVATIONS, AND DETAILS.
11. VERIFY ALL EXISTING CONDITIONS, ELEVATIONS, AND DETAILS.
12. VERIFY ALL EXISTING CONDITIONS, ELEVATIONS, AND DETAILS.
13. VERIFY SALVAGEABLE ITEMS WITH THE OWNER.
14. SEE CIVIL, STRUCTURAL, MECHANICAL, AND ELECTRICAL DRAWINGS FOR ADDITIONAL INFORMATION RELEVANT TO DEMOLITION & PAVING.
15. VERIFY ALL EXISTING CONDITIONS, ELEVATIONS, AND DETAILS.
16. VERIFY ALL EXISTING CONDITIONS, ELEVATIONS, AND DETAILS.
17. VERIFY ALL EXISTING CONDITIONS, ELEVATIONS, AND DETAILS.
18. VERIFY ALL EXISTING CONDITIONS, ELEVATIONS, AND DETAILS.
19. VERIFY ALL EXISTING CONDITIONS, ELEVATIONS, AND DETAILS.
20. VERIFY ALL EXISTING CONDITIONS, ELEVATIONS, AND DETAILS.
21. VERIFY ALL EXISTING CONDITIONS, ELEVATIONS, AND DETAILS.
22. VERIFY ALL EXISTING CONDITIONS, ELEVATIONS, AND DETAILS.
23. VERIFY ALL EXISTING CONDITIONS, ELEVATIONS, AND DETAILS.
24. VERIFY ALL EXISTING CONDITIONS, ELEVATIONS, AND DETAILS.
25. VERIFY ALL EXISTING CONDITIONS, ELEVATIONS, AND DETAILS.
26. VERIFY ALL EXISTING CONDITIONS, ELEVATIONS, AND DETAILS.
27. VERIFY ALL EXISTING CONDITIONS, ELEVATIONS, AND DETAILS.
28. VERIFY ALL EXISTING CONDITIONS, ELEVATIONS, AND DETAILS.
29. VERIFY ALL EXISTING CONDITIONS, ELEVATIONS, AND DETAILS.
30. VERIFY ALL EXISTING CONDITIONS, ELEVATIONS, AND DETAILS.
31. VERIFY ALL EXISTING CONDITIONS, ELEVATIONS, AND DETAILS.
32. VERIFY ALL EXISTING CONDITIONS, ELEVATIONS, AND DETAILS.
33. VERIFY ALL EXISTING CONDITIONS, ELEVATIONS, AND DETAILS.
34. VERIFY ALL EXISTING CONDITIONS, ELEVATIONS, AND DETAILS.
35. VERIFY ALL EXISTING CONDITIONS, ELEVATIONS, AND DETAILS.
36. VERIFY ALL EXISTING CONDITIONS, ELEVATIONS, AND DETAILS.
37. VERIFY ALL EXISTING CONDITIONS, ELEVATIONS, AND DETAILS.
38. VERIFY ALL EXISTING CONDITIONS, ELEVATIONS, AND DETAILS.
39. VERIFY ALL EXISTING CONDITIONS, ELEVATIONS, AND DETAILS.
40. VERIFY ALL EXISTING CONDITIONS, ELEVATIONS, AND DETAILS.
41. VERIFY ALL EXISTING CONDITIONS, ELEVATIONS, AND DETAILS.
42. VERIFY ALL EXISTING CONDITIONS, ELEVATIONS, AND DETAILS.
43. VERIFY ALL EXISTING CONDITIONS, ELEVATIONS, AND DETAILS.
44. VERIFY ALL EXISTING CONDITIONS, ELEVATIONS, AND DETAILS.
45. VERIFY ALL EXISTING CONDITIONS, ELEVATIONS, AND DETAILS.
46. VERIFY ALL EXISTING CONDITIONS, ELEVATIONS, AND DETAILS.
47. VERIFY ALL EXISTING CONDITIONS, ELEVATIONS, AND DETAILS.
48. VERIFY ALL EXISTING CONDITIONS, ELEVATIONS, AND DETAILS.
49. VERIFY ALL EXISTING CONDITIONS, ELEVATIONS, AND DETAILS.
50. VERIFY ALL EXISTING CONDITIONS, ELEVATIONS, AND DETAILS.
51. VERIFY ALL EXISTING CONDITIONS, ELEVATIONS, AND DETAILS.

ROOM FINISH SCHEDULE

FLOOR / BASE	ROOM KEY
A. DIT-1 / DIT-1	ROOM #
B. CORSET TILE / VINYL BASE	WALL MAT. & FIN.
C. DIT-1 / DIT-2 / CERAMIC TILE	ROOM #
D. CORSET TILE / VINYL BASE	WALL MAT. & FIN.
E. SEALED CONCRETE / VCS-2	FLOORBASE
F. SEALED CONCRETE / NONE	CEILING MAT.
G. SEALED CONCRETE / NONE	HEIGHT
H. EPOXY PAINT / VINYL BASE	CEILING / FINISH
I. WALK OFF MAT / NONE	CEILING / FINISH
J. GMB / PAINT	CEILING / FINISH
K. CMU / PAINT	CEILING / FINISH
L. CMU / PAINT	CEILING / FINISH
M. CMU / PAINT	CEILING / FINISH
N. CMU / PAINT	CEILING / FINISH
O. CMU / PAINT	CEILING / FINISH
P. CMU / PAINT	CEILING / FINISH
Q. CMU / PAINT	CEILING / FINISH
R. CMU / PAINT	CEILING / FINISH
S. CMU / PAINT	CEILING / FINISH
T. CMU / PAINT	CEILING / FINISH
U. CMU / PAINT	CEILING / FINISH
V. CMU / PAINT	CEILING / FINISH
W. CMU / PAINT	CEILING / FINISH
X. CMU / PAINT	CEILING / FINISH
Y. CMU / PAINT	CEILING / FINISH
Z. CMU / PAINT	CEILING / FINISH



1 LOBBY FLOOR PLAN - AREA A
1/8" = 1'-0"

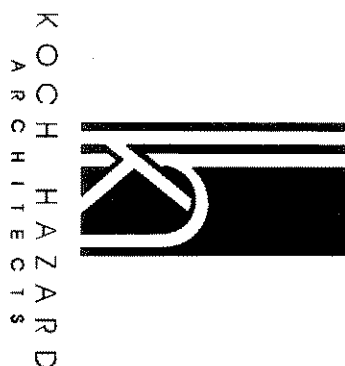


KEYNOTES

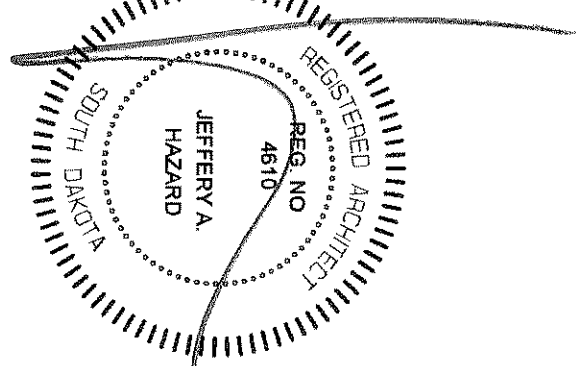
- DIVISION 4. MASONRY
- DIVISION 5. WOOD, PLASTER AND COMPOSITES
- 6.53 PLASTIC LAMINATE TOP BACKER BOARD
- 6.58 BRACKET
- DIVISION 6. FINISHES
- 6.51 CERAMIC TILE
- DIVISION 10. SPECIALTIES
- 10.12 UNIFORM SCREEN
- 10.13 MOP AND ROOM HOLDER
- 10.16 GRAB BAR BLUE DISPENSER
- 10.18 SENTRY WARDEN DISPOSAL
- 10.19 SENTRY WARDEN DISPOSAL
- 10.22 SHOWER ROD, CURTAIN, AND HOOKS
- 10.23 TOLLING SHOWER SEAT
- 10.27 GLASS MIRROR W/SS TRIM
- 10.29 GLASS MIRROR
- DIVISION 14. MECHANICAL
- 15.02 ELECTRIC WATER COOLER (EWC)
- 15.03 SINK CLOSET
- 15.05 URINAL
- 15.08 WRAP WASTE AND H.W. LINES INSULATION
- DIVISION 22. PLUMBING
- 22.02 WATER COOLER (EWC)
- 22.03 URINAL
- 22.05 SINK

GENERAL NOTES

23. RESTROOM WALLS ARE TO EXTEND TO THE DECK
26. SEE MECHANICAL FOR ALL FLOOR DRAIN SIZES AND LOCATIONS I.O.N. SET FLOOR DRAINS MINIMUM 1/2" BELOW FINISHED FLOOR. PROVIDE EVEN SLOPE FROM WALL TO DRAIN W/A MINIMUM SLOPE OF 1/4" PER FOOT
37. WHERE AN E.W.C. OCCURS IN A ROOM FINISHED W/ CARPET OR WOOD, PROVIDE V.C.T. AND A VANT. TRANSITION STRIP IN THE RECESS BELOW THE E.W.C.
38. SEE FLOOR PLAN FOR CASE WORK PLAY INFORMATION. COORDINATE ALL CASEWORK WITH CHARGES SHOWN ON FLOOR PLANS. FIELD VERIFY ALL CASEWORK OPENINGS.
40. PROVIDE STAINLESS STEEL MOP HOLDER AND 3' 0" LONG SHELF AT ALL CUSTOMAL CLOSETS.
48. COORDINATE DIVISION 15 (DIVISION 22) KENOTED ITEMS W/ MECHANICAL.
50. COORDINATE DIVISION 23 KENOTED ITEMS W/ MECHANICAL.
51. COORDINATE DIVISION 16 (DIVISION 24) KENOTED ITEMS W/ ELECTRICAL.



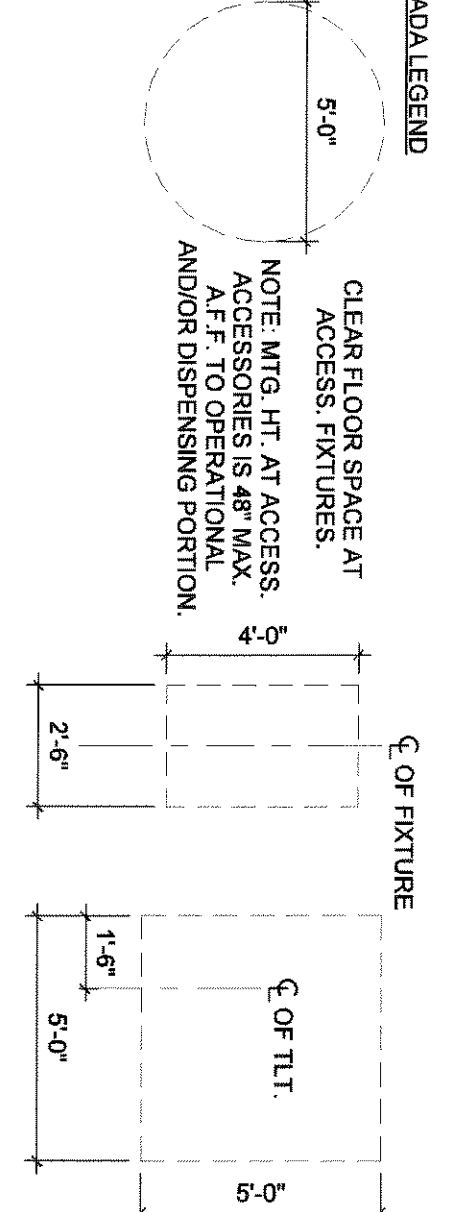
431 North Phillips 200
SOU. F.C.B., SD 57104
T. 605.336.3718
F. 605.336.0438
W. KOCHHAZARD.COM



PROJECT NO. 09106
DATE 03/31/10
PROJECT WEST CENTRAL HIGH SCHOOL
GYMNASIUM ADDITION
HARTFORD, SOUTH DAKOTA

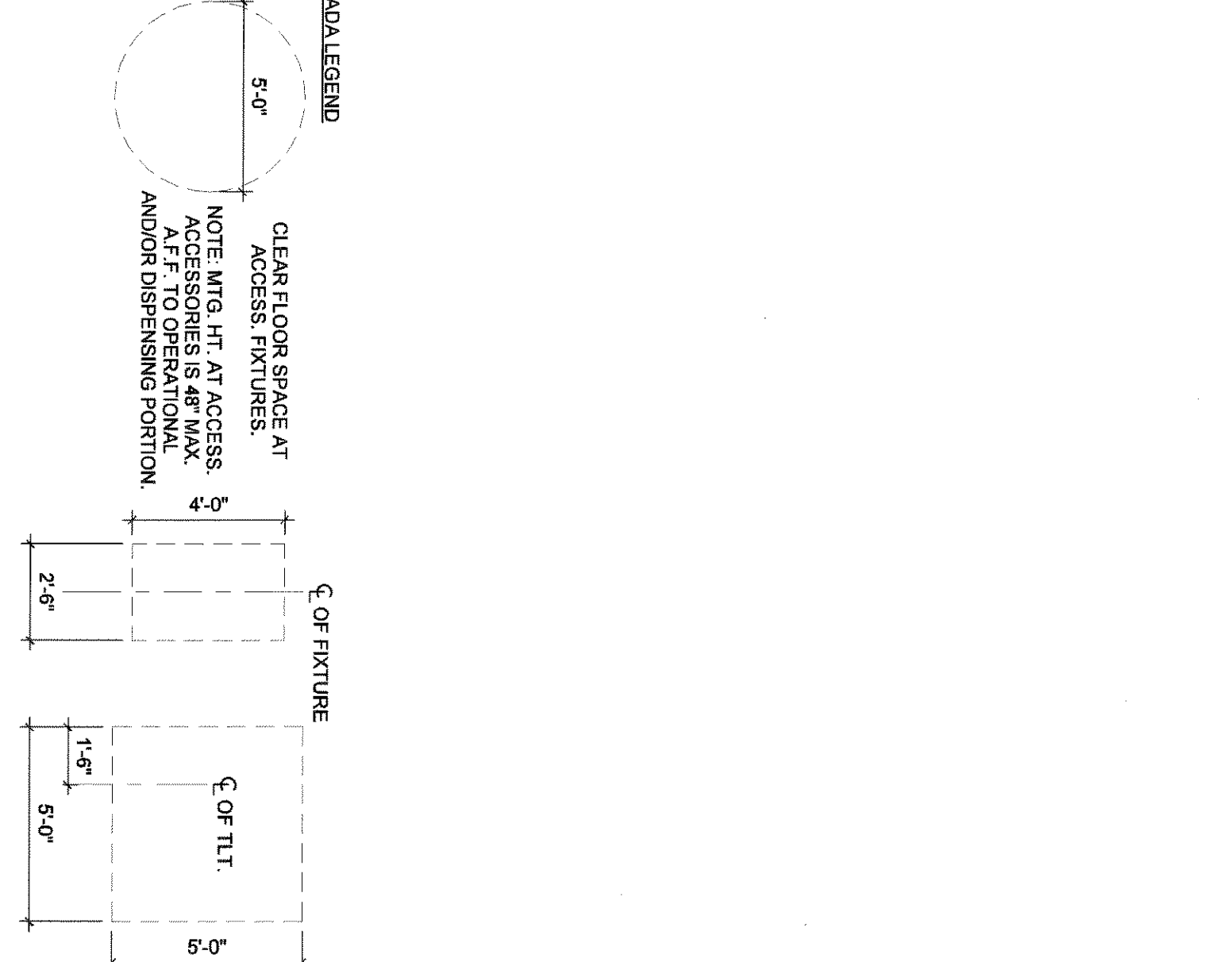
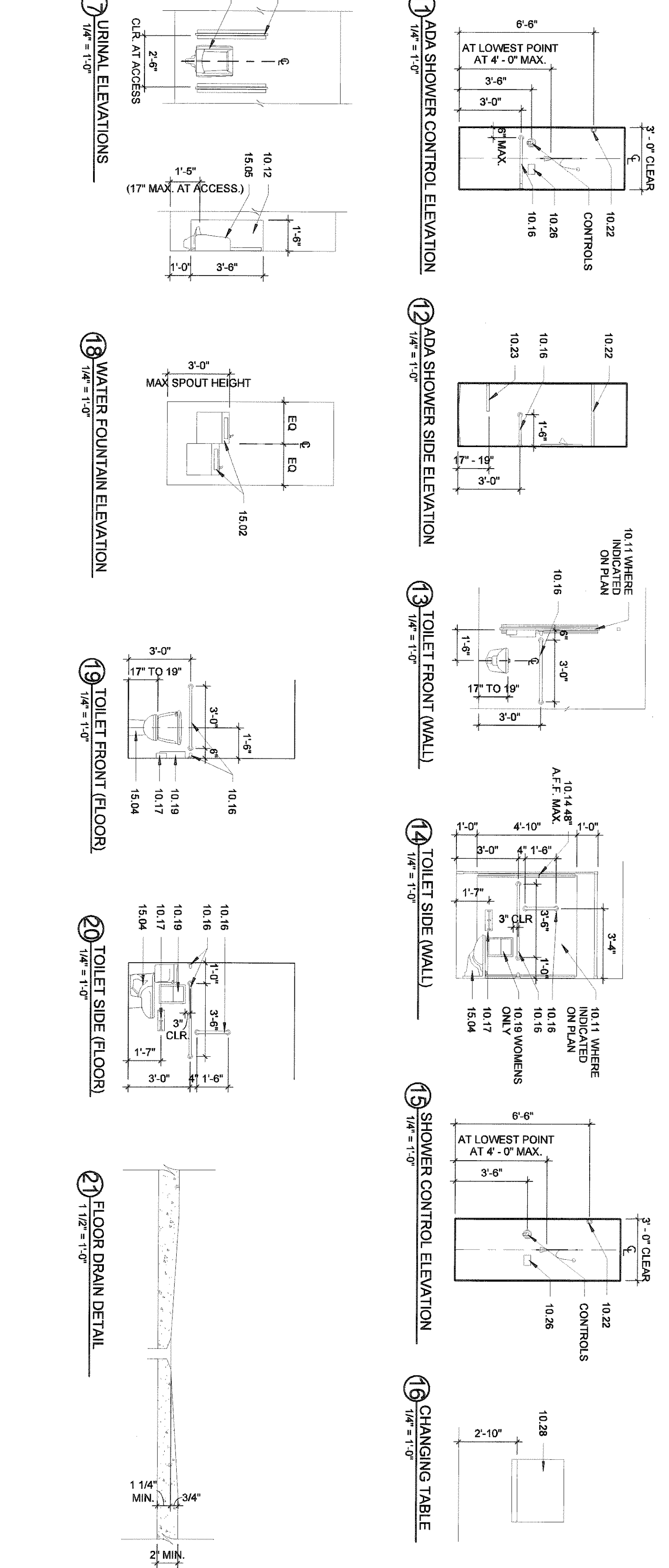
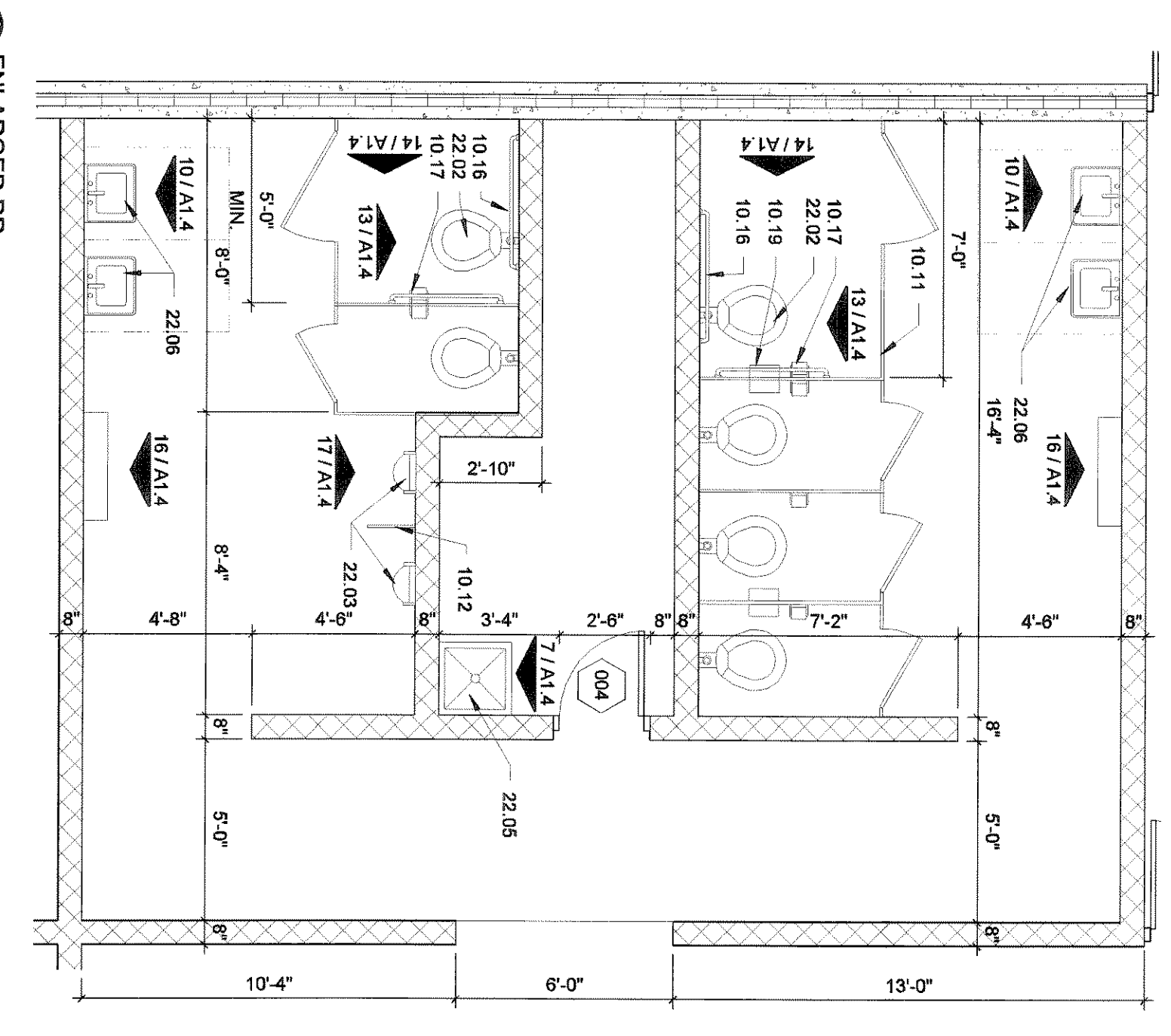
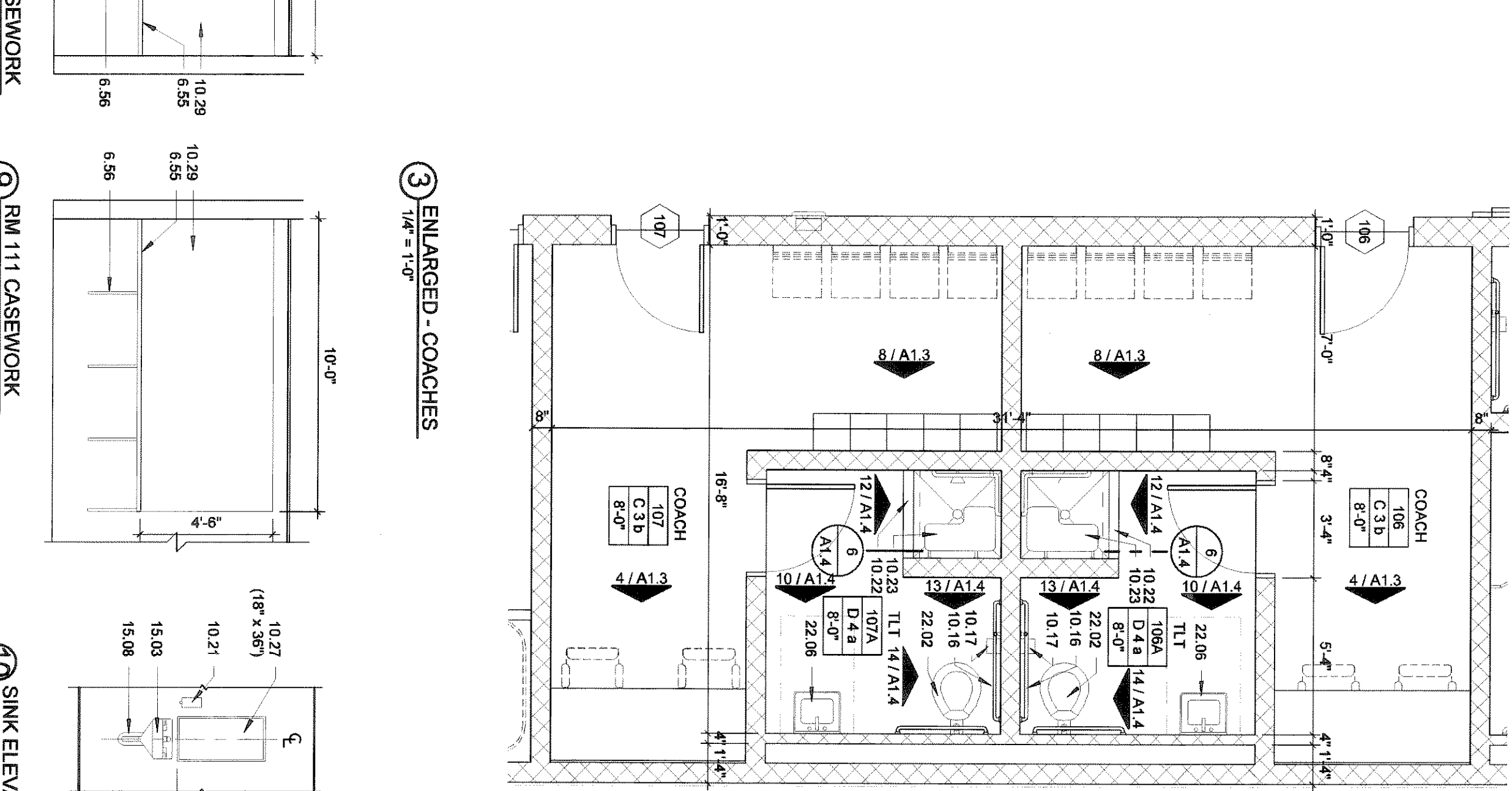
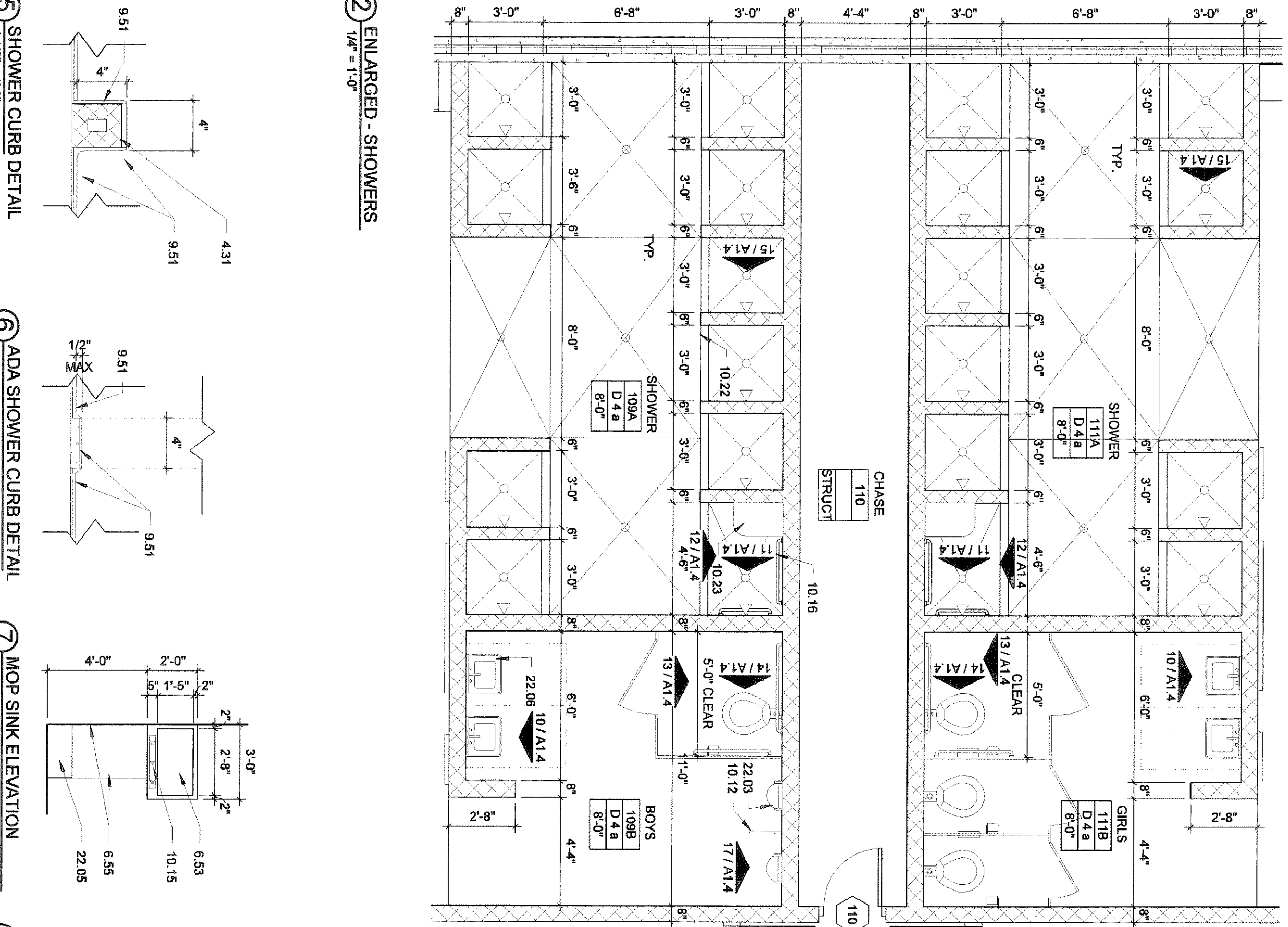
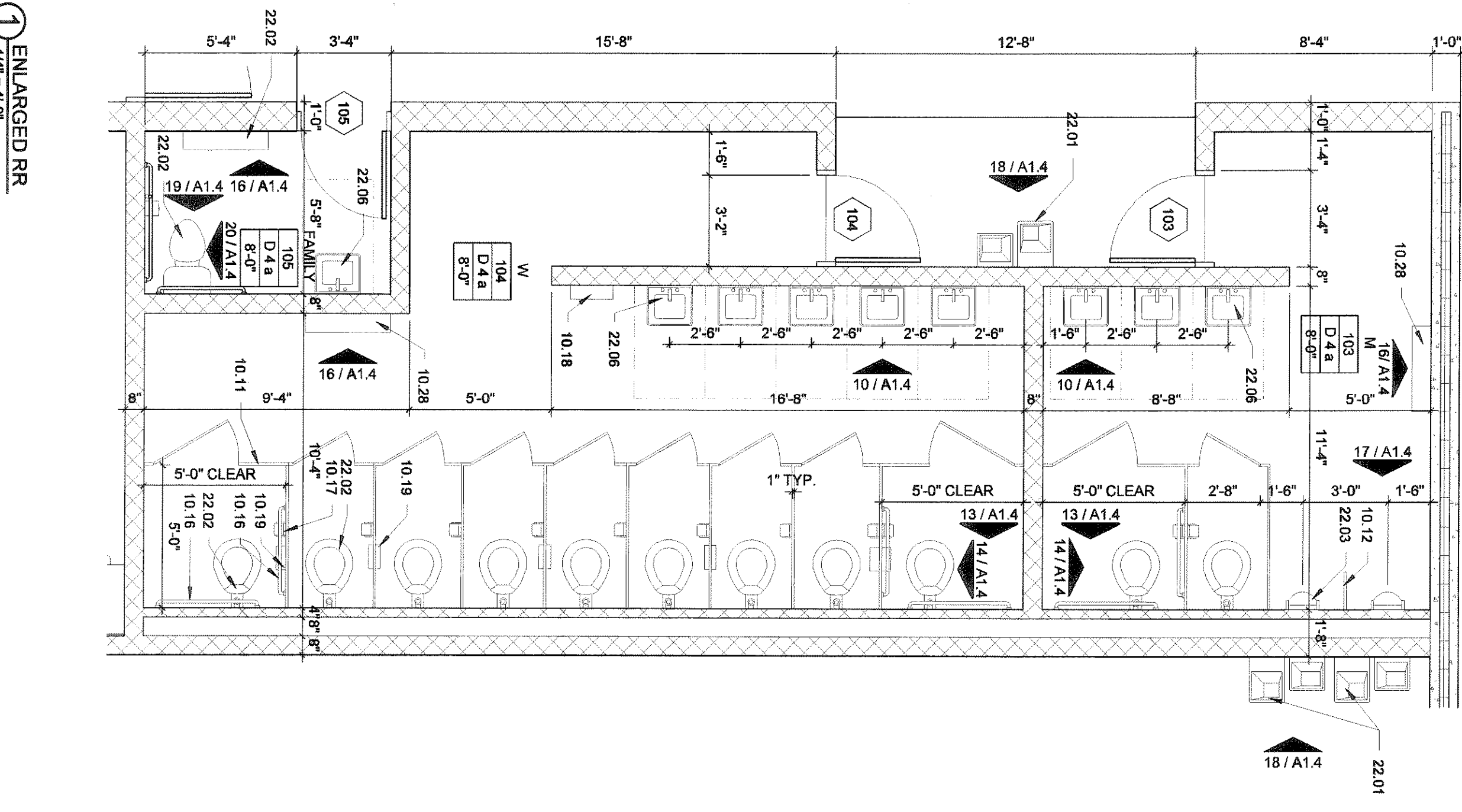
SHEET TITLE: ENLARGED PLANS INTERIOR ELEVATIONS & DETAILS

A1.4



ROOM FINISH SCHEDULE

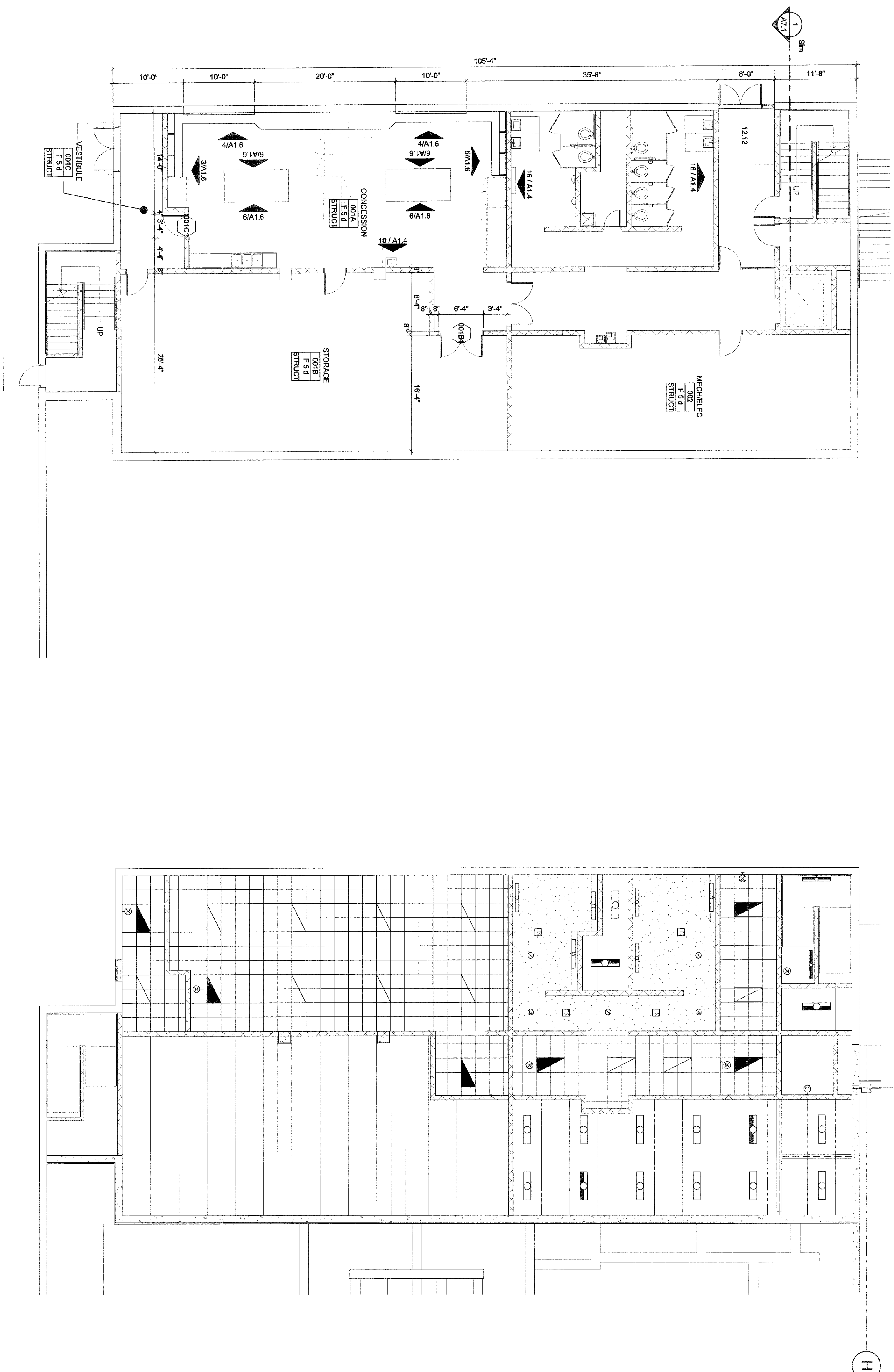
FLOOR / BASE	ROOM KEY	ROOM #
A. OT-1 / OT-1	WALL MAT	ROOM #
B. VCT-1 / VINYL BASE	WALL MAT	ROOM #
C. CARPET TILE / VINYL BASE	WALL MAT	ROOM #
D. CARPET TILE / VINYL BASE	WALL MAT	ROOM #
E. ATH. WOOD PAR. RUBBER BASE	WALL MAT	ROOM #
F. SEALED CONCRETE / VCB-1	WALL MAT	ROOM #
G. EXISTING / NONE	WALL MAT	ROOM #
H. EXISTING / NONE	WALL MAT	ROOM #
I. VCT-2 / VINYL BASE	WALL MAT	ROOM #
J. VCT-2 / VINYL BASE	WALL MAT	ROOM #
K. WALK OFF MAT / NONE	WALL MAT	ROOM #
L. WALK OFF MAT / NONE	WALL MAT	ROOM #
1. GWB / PAINT	CEILING / FINISH	ROOM #
2. GWB / CMT-1 / CMT-2	CEILING / FINISH	ROOM #
3. CMU / PAINT	CEILING / FINISH	ROOM #
4. CMU / PAINT	CEILING / FINISH	ROOM #
5. CMU / EPOXY PAINT	CEILING / FINISH	ROOM #
6. PRECAST / NONE	CEILING / FINISH	ROOM #
7. EXIST / NONE	CEILING / FINISH	ROOM #
8. CMU / NONE	CEILING / FINISH	ROOM #
9. CMU / CMT-2	CEILING / FINISH	ROOM #
10. EXISTING / NONE	CEILING / FINISH	ROOM #



KEYNOTES

0.41	BASE CABINET
6.42	WALL CABINET
6.51	FINISHED END
6.53	PLASTIC LAMINATE TOP, BACK & EDGE
5.75	DRAWER

1

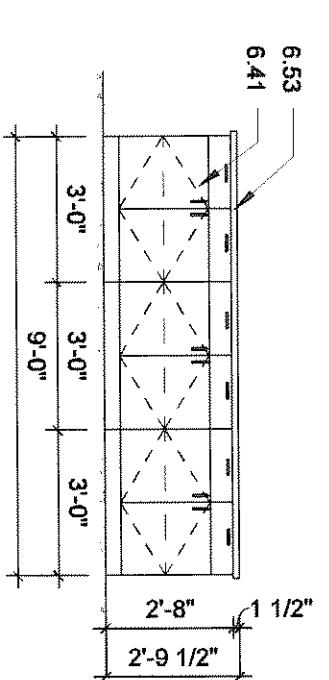


GENERAL NOTES

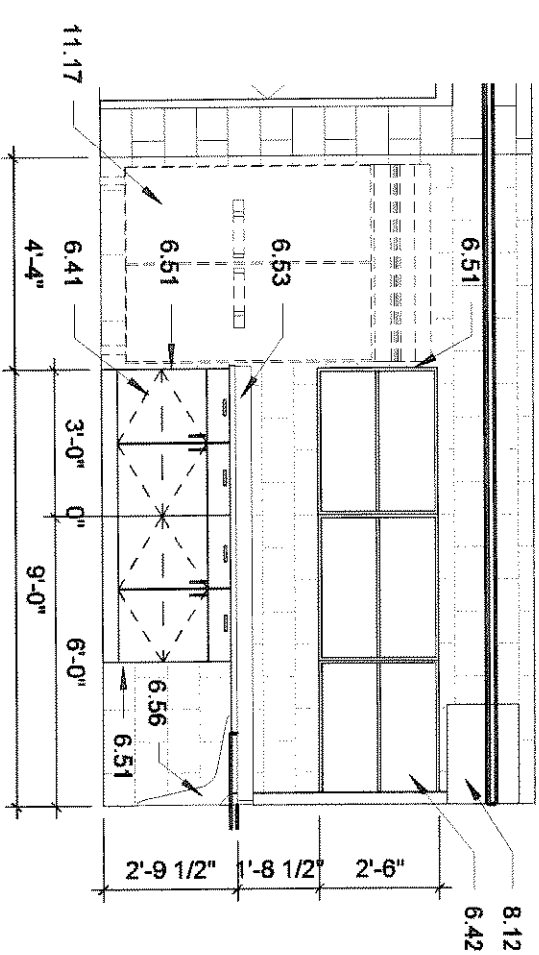
7. CONTRACTOR TO VERIFY ALL EXISTING CONDITIONS: ELEVATIONS AND DIMENSIONS.
8. PROVIDE FOR AND VERIFY: LOCATION, SIZE, AND QUANTITY OF ALL EQUIPMENT PADS AS SHOWN ON ELECTRICAL AND MECHANICAL DRAWINGS. (COORDINATE LOCATIONS WITH ALL PLANS, SECTIONS, AND DETAILS)
9. VERIFY AVAILABLE UTILITIES WITH THE OWNER.
10. PROTECT ALL EXISTING UTILITIES.
11. SEE PLAN, STRUCTURAL, MECHANICAL, AND ELECTRICAL DRAWINGS FOR ADDITIONAL INFORMATION REGARDING UTILIZATION AND PROTECTING.
12. PATCH REMAINING EXISTING CONSTRUCTION, AFFECTED BY DEMOLITION, TO MATCH EXISTING CON.
13. ALLOW TIME TO EXTEND TO CHECK LISTED OTHERWISE NOTED ON WALL TYPES.
14. SEE MECHANICAL FLOOR PLAN FOR CORE PERIMETER AND LOCATIONS ON WALL TYPES. DRANS MINIMUM 3" BELOW FINISHED FLOOR. PROVIDE EVEN SLOPE FROM WALL TO DRAIN W/ MAXIMUM SLOPE OF 7/8" PER FOOT.
15. COORDINATE ALL CHASE SIZES AND LOCATIONS WITH MECHANICAL.
16. COORDINATE ALL DUCT AND SHUT OFFENING SEES AND LOCATIONS IN WALLS AND FLOORS WITH MECHANICAL AND ELECTRICAL. PROVIDE ALL REQUIRED LISTS FOR ALL OPENINGS. SEE STRUCTURAL Lintel, SCHEDULE.
17. ALL ITEMS INSTALLED IN CEILINGS, INCLUDING SPRINKLER HEADS, ARE TO BE CENTERED BETWEEN EXISTING WALLS AND PARTITION WALLS.
18. ALL ITEMS INSTALLED ON OR ABOUT CEILING TRAYS AND RAILS, AND CENTERED IN CEILING TRAYS.
19. ALL ITEMS APPROVED ON OR ABOUT CEILING TRAYS AND RAILS, AND CENTERED IN CEILING TRAYS.
20. WHEN NOT OTHERWISE NOTED, ALL PARTS ARE TO BE CENTERED OVER DOOR OR DOOR OPENING WHERE APPLICABLE.
21. REFER TO SPECIFICATIONS FOR CEILING AND PROVIDE SUSPENSION REQUIREMENTS.
22. COMBINE AND MATCH EXISTING CONDITIONS: ALL FLOOR ELEVATIONS, ROOF ELEVATIONS, FINISH FLOOR ELEVATIONS, FINISH CEILING ELEVATIONS, FINISH CEILING FINISHES, AND ELEVATIONS. DRAWINGS AND ALTERNATE TO MATCH THAT OF THE EXISTING BUILDING.
23. COORDINATE DIVISION 15, DIVISION 22, KENOTED ITEMS W/ MECHANICAL.
24. COORDINATE DIVISION 23, KENOTED ITEMS W/ MECHANICAL.
25. COORDINATE DIVISION 16, DIVISION 29, KENOTED ITEMS W/ ELECTRICAL.

ROOM FINISH SCHEDULE

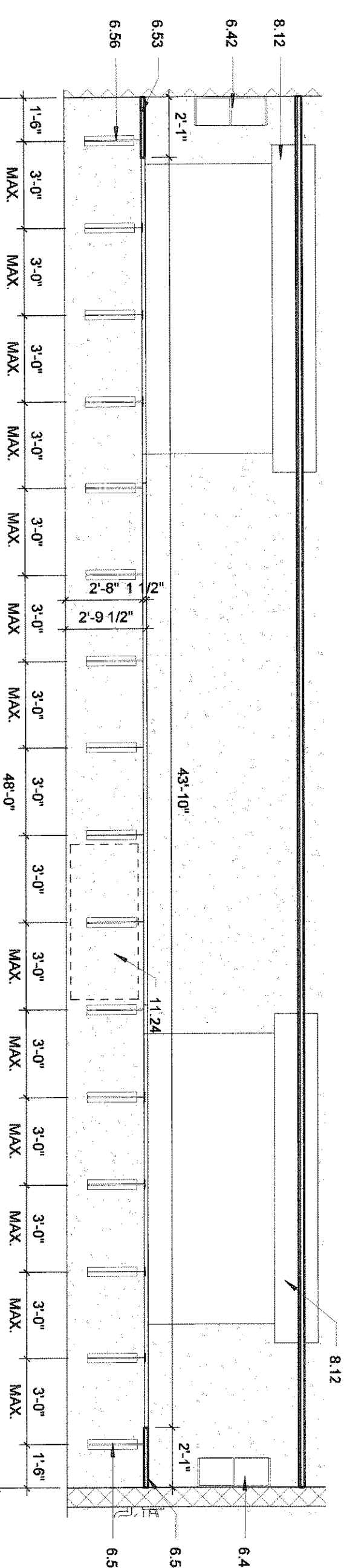
	FLOOR / BASE	ROOM KEY
1. Q1 / D1 / 1	QCT1 / FLOOR BASE	ROOM #
2. Q1 / D1 / 2	QCT2 / FLOOR BASE	WALL MAT & FIN.
3. Q1 / D1 / 3	QCT3 / FLOOR BASE	ROOM 123
4. Q1 / D1 / 4	QCT4 / FLOOR BASE	ROOM 123 SPECIAL FINISH
5. Q1 / D1 / 5	QCT5 / FLOOR BASE	CEILING
6. Q1 / D1 / 6	QCT6 / FLOOR BASE	CEILING MAT & FINISH
7. Q1 / D1 / 7	QCT7 / FLOOR BASE	HEIGHT
8. Q1 / D1 / 8	QCT8 / FLOOR BASE	
9. Q1 / D1 / 9	QCT9 / FLOOR BASE	
10. Q1 / D1 / 10	QCT10 / FLOOR BASE	
11. Q1 / D1 / 11	QCT11 / FLOOR BASE	
12. Q1 / D1 / 12	QCT12 / FLOOR BASE	
13. Q1 / D1 / 13	QCT13 / FLOOR BASE	
14. Q1 / D1 / 14	QCT14 / FLOOR BASE	
15. Q1 / D1 / 15	QCT15 / FLOOR BASE	
16. Q1 / D1 / 16	QCT16 / FLOOR BASE	
17. Q1 / D1 / 17	QCT17 / FLOOR BASE	
18. Q1 / D1 / 18	QCT18 / FLOOR BASE	
19. Q1 / D1 / 19	QCT19 / FLOOR BASE	
20. Q1 / D1 / 20	QCT20 / FLOOR BASE	
21. Q1 / D1 / 21	QCT21 / FLOOR BASE	
22. Q1 / D1 / 22	QCT22 / FLOOR BASE	
23. Q1 / D1 / 23	QCT23 / FLOOR BASE	
24. Q1 / D1 / 24	QCT24 / FLOOR BASE	
25. Q1 / D1 / 25	QCT25 / FLOOR BASE	
26. Q1 / D1 / 26	QCT26 / FLOOR BASE	
27. Q1 / D1 / 27	QCT27 / FLOOR BASE	
28. Q1 / D1 / 28	QCT28 / FLOOR BASE	
29. Q1 / D1 / 29	QCT29 / FLOOR BASE	
30. Q1 / D1 / 30	QCT30 / FLOOR BASE	
31. Q1 / D1 / 31	QCT31 / FLOOR BASE	
32. Q1 / D1 / 32	QCT32 / FLOOR BASE	
33. Q1 / D1 / 33	QCT33 / FLOOR BASE	
34. Q1 / D1 / 34	QCT34 / FLOOR BASE	
35. Q1 / D1 / 35	QCT35 / FLOOR BASE	
36. Q1 / D1 / 36	QCT36 / FLOOR BASE	
37. Q1 / D1 / 37	QCT37 / FLOOR BASE	
38. Q1 / D1 / 38	QCT38 / FLOOR BASE	
39. Q1 / D1 / 39	QCT39 / FLOOR BASE	
40. Q1 / D1 / 40	QCT40 / FLOOR BASE	
41. Q1 / D1 / 41	QCT41 / FLOOR BASE	
42. Q1 / D1 / 42	QCT42 / FLOOR BASE	
43. Q1 / D1 / 43	QCT43 / FLOOR BASE	
44. Q1 / D1 / 44	QCT44 / FLOOR BASE	
45. Q1 / D1 / 45	QCT45 / FLOOR BASE	
46. Q1 / D1 / 46	QCT46 / FLOOR BASE	
47. Q1 / D1 / 47	QCT47 / FLOOR BASE	
48. Q1 / D1 / 48	QCT48 / FLOOR BASE	
49. Q1 / D1 / 49	QCT49 / FLOOR BASE	
50. Q1 / D1 / 50	QCT50 / FLOOR BASE	
51. Q1 / D1 / 51	QCT51 / FLOOR BASE	
52. Q1 / D1 / 52	QCT52 / FLOOR BASE	
53. Q1 / D1 / 53	QCT53 / FLOOR BASE	
54. Q1 / D1 / 54	QCT54 / FLOOR BASE	
55. Q1 / D1 / 55	QCT55 / FLOOR BASE	
56. Q1 / D1 / 56	QCT56 / FLOOR BASE	
57. Q1 / D1 / 57	QCT57 / FLOOR BASE	
58. Q1 / D1 / 58	QCT58 / FLOOR BASE	
59. Q1 / D1 / 59	QCT59 / FLOOR BASE	
60. Q1 / D1 / 60	QCT60 / FLOOR BASE	
61. Q1 / D1 / 61	QCT61 / FLOOR BASE	
62. Q1 / D1 / 62	QCT62 / FLOOR BASE	
63. Q1 / D1 / 63	QCT63 / FLOOR BASE	
64. Q1 / D1 / 64	QCT64 / FLOOR BASE	
65. Q1 / D1 / 65	QCT65 / FLOOR BASE	
66. Q1 / D1 / 66	QCT66 / FLOOR BASE	
67. Q1 / D1 / 67	QCT67 / FLOOR BASE	
68. Q1 / D1 / 68	QCT68 / FLOOR BASE	
69. Q1 / D1 / 69	QCT69 / FLOOR BASE	
70. Q1 / D1 / 70	QCT70 / FLOOR BASE	
71. Q1 / D1 / 71	QCT71 / FLOOR BASE	
72. Q1 / D1 / 72	QCT72 / FLOOR BASE	
73. Q1 / D1 / 73	QCT73 / FLOOR BASE	
74. Q1 / D1 / 74	QCT74 / FLOOR BASE	
75. Q1 / D1 / 75	QCT75 / FLOOR BASE	
76. Q1 / D1 / 76	QCT76 / FLOOR BASE	
77. Q1 / D1 / 77	QCT77 / FLOOR BASE	
78. Q1 / D1 / 78	QCT78 / FLOOR BASE	
79. Q1 / D1 / 79	QCT79 / FLOOR BASE	
80. Q1 / D1 / 80	QCT80 / FLOOR BASE	
81. Q1 / D1 / 81	QCT81 / FLOOR BASE	
82. Q1 / D1 / 82	QCT82 / FLOOR BASE	
83. Q1 / D1 / 83	QCT83 / FLOOR BASE	
84. Q1 / D1 / 84	QCT84 / FLOOR BASE	
85. Q1 / D1 / 85	QCT85 / FLOOR BASE	
86. Q1 / D1 / 86	QCT86 / FLOOR BASE	
87. Q1 / D1 / 87	QCT87 / FLOOR BASE	
88. Q1 / D1 / 88	QCT88 / FLOOR BASE	
89. Q1 / D1 / 89	QCT89 / FLOOR BASE	
90. Q1 / D1 / 90	QCT90 / FLOOR BASE	
91. Q1 / D1 / 91	QCT91 / FLOOR BASE	
92. Q1 / D1 / 92	QCT92 / FLOOR BASE	
93. Q1 / D1 / 93	QCT93 / FLOOR BASE	
94. Q1 / D1 / 94	QCT94 / FLOOR BASE	
95. Q1 / D1 / 95	QCT95 / FLOOR BASE	
96. Q1 / D1 / 96	QCT96 / FLOOR BASE	
97. Q1 / D1 / 97	QCT97 / FLOOR BASE	
98. Q1 / D1 / 98	QCT98 / FLOOR BASE	
99. Q1 / D1 / 99	QCT99 / FLOOR BASE	
100. Q1 / D1 / 100	QCT100 / FLOOR BASE	
101. Q1 / D1 / 101	QCT101 / FLOOR BASE	



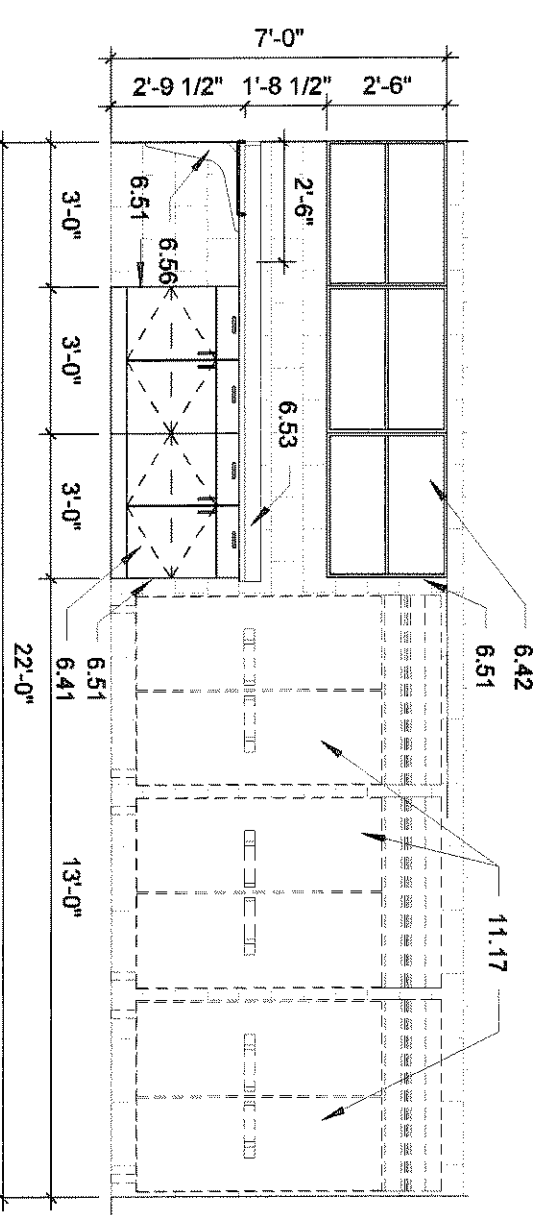
⑥ TYPICAL ISLAND ELEVATION
1/4" = 1'-0"



③ SOUTH LL CONCESS ELEV
1/4" = 1'-0"



4 WEST LL CONCESSIONS ELEV
1/4" = 1'-0"



5 1/4" NORTH HILL CONCESS ELEV
1/4" = 1'-0"

1 LOWER LEVEL CONCESSIONS -
ALTERNATE
 $1/8" \approx 1'-0"$

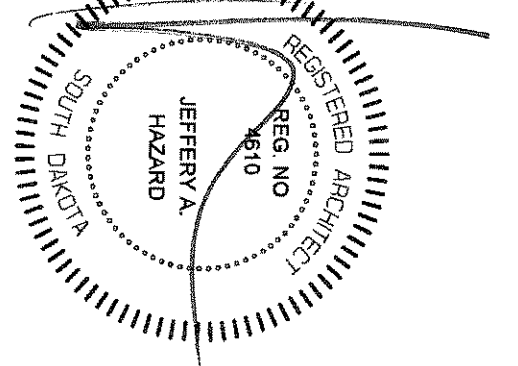
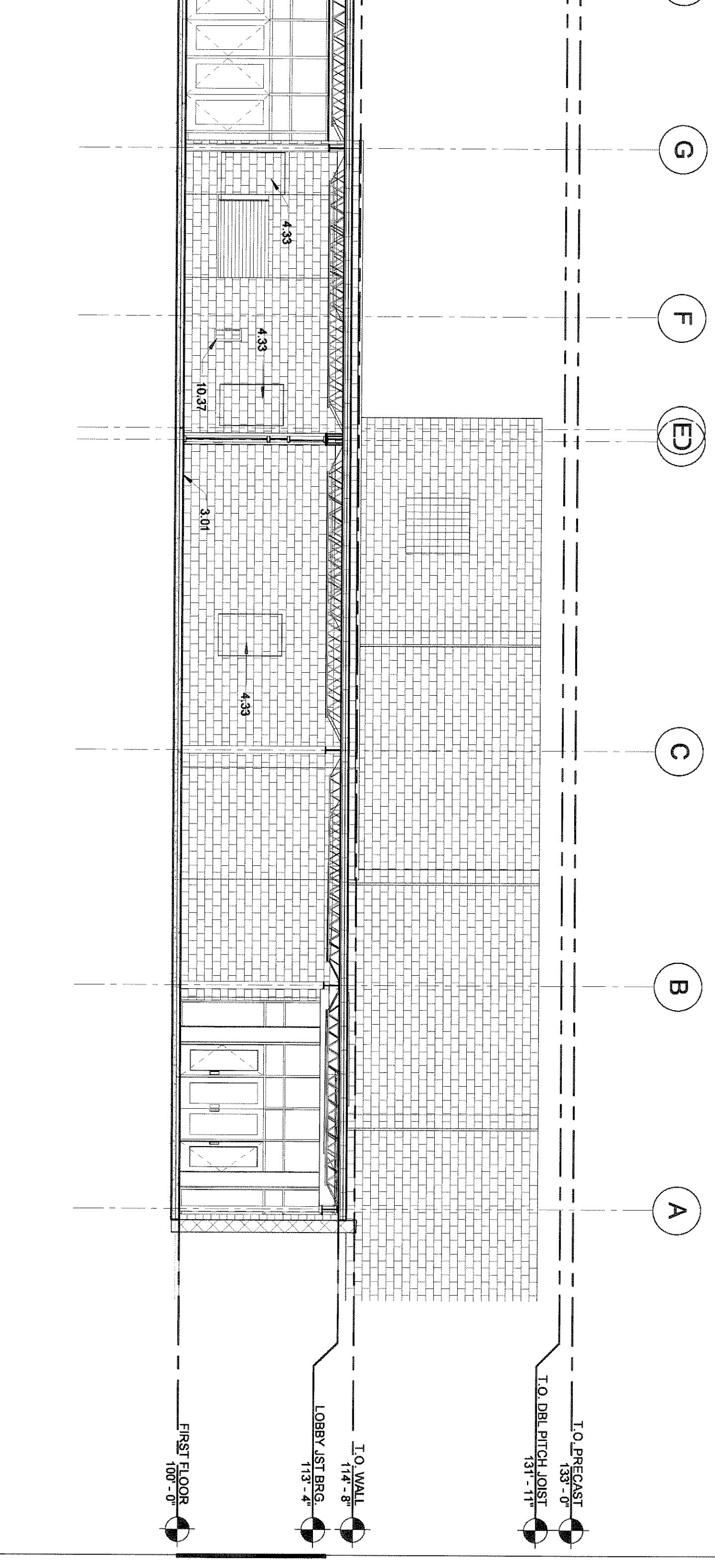
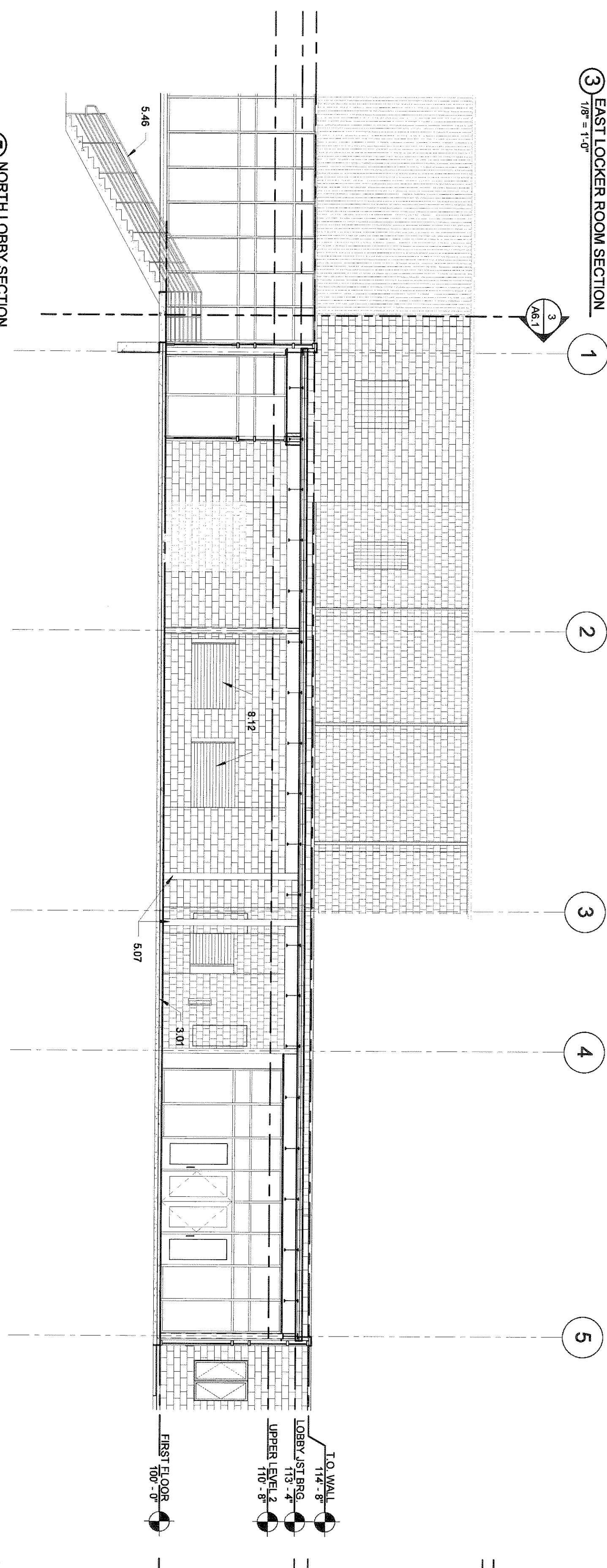
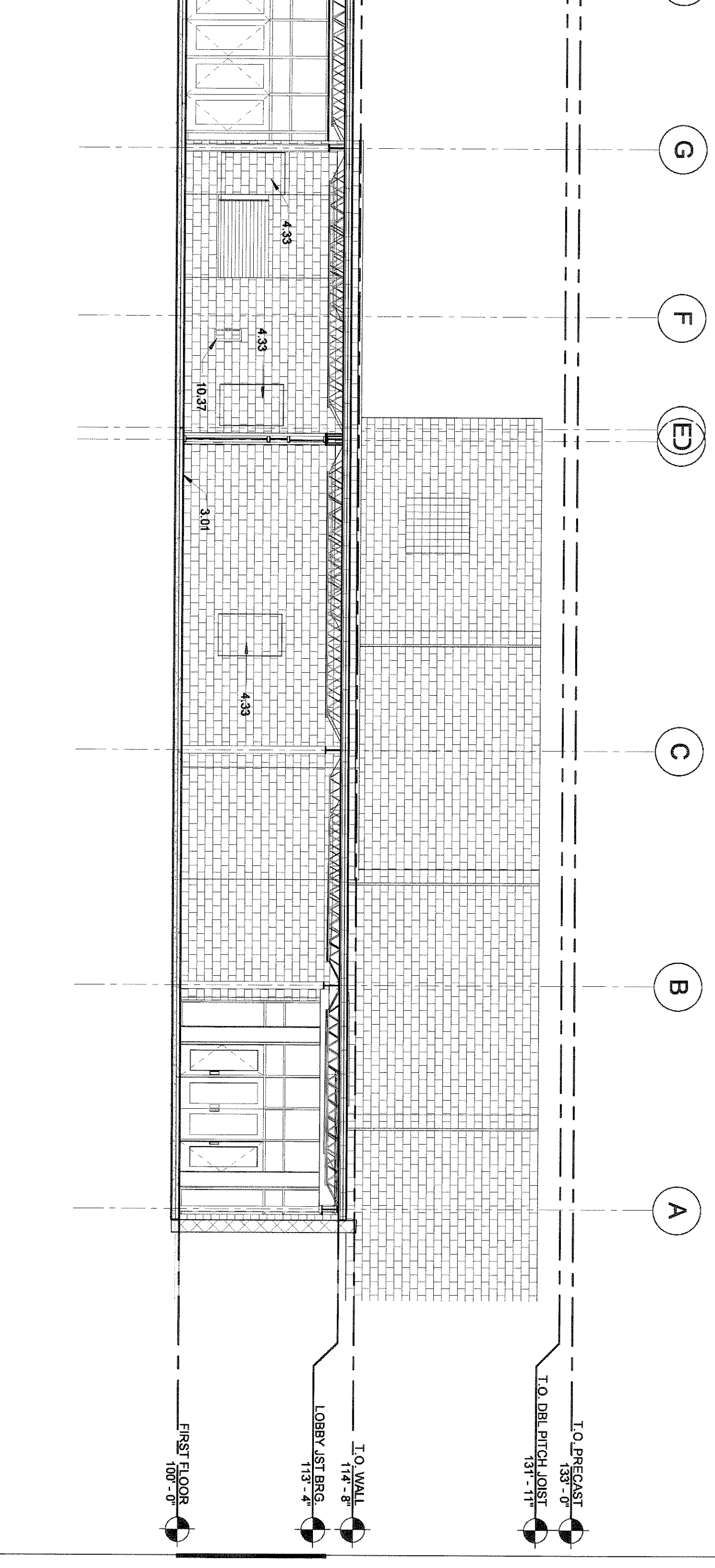
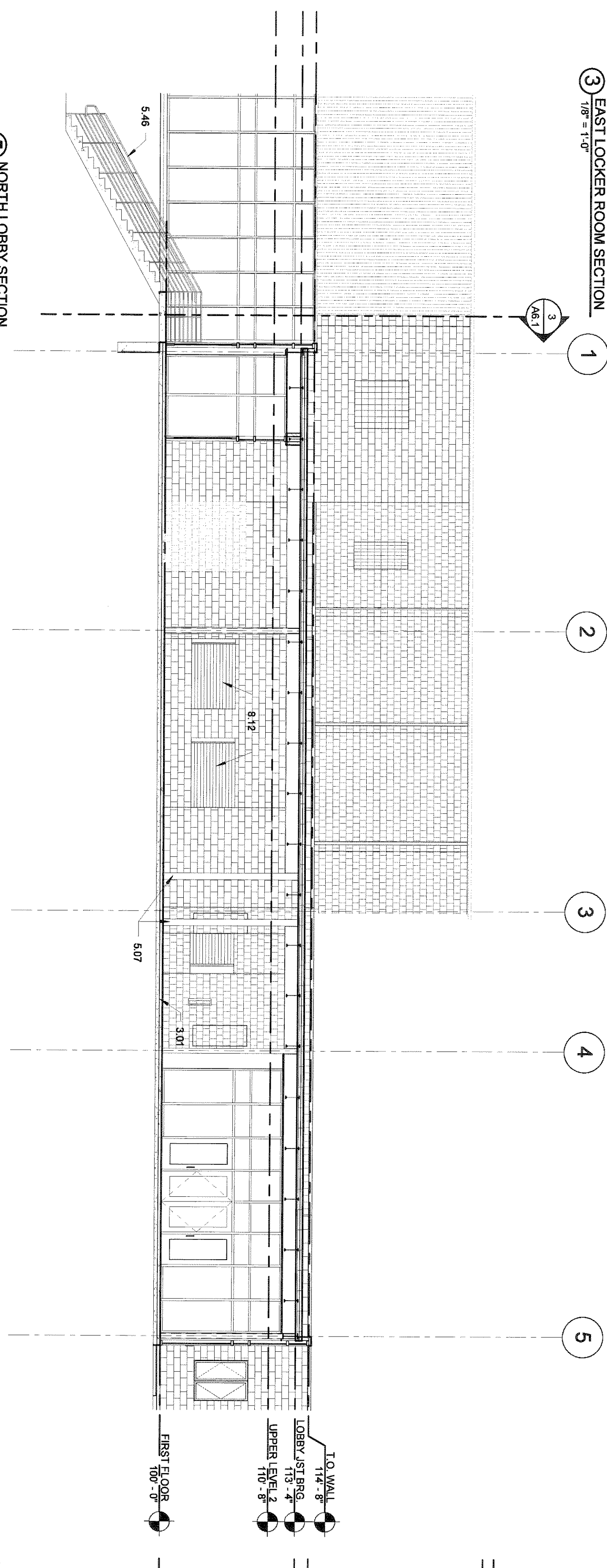
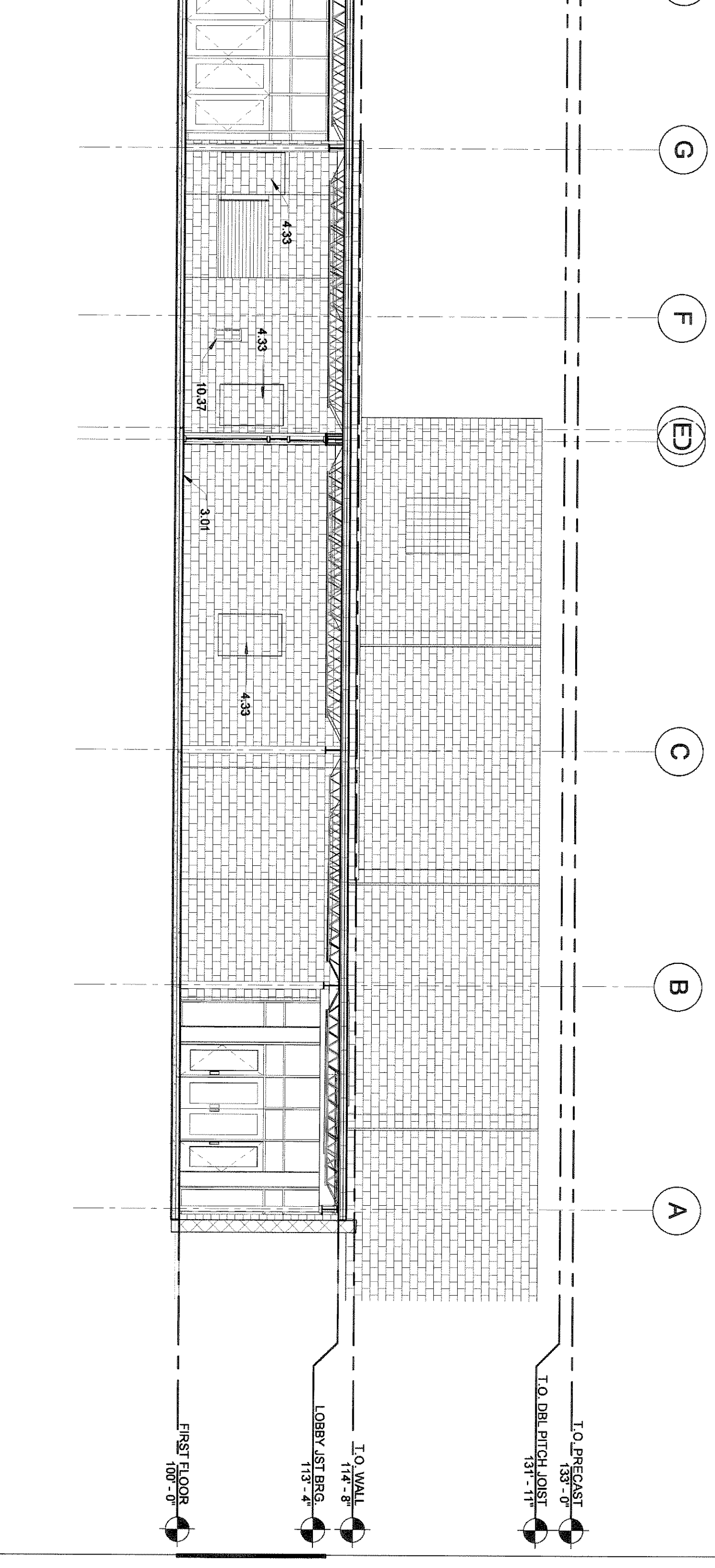
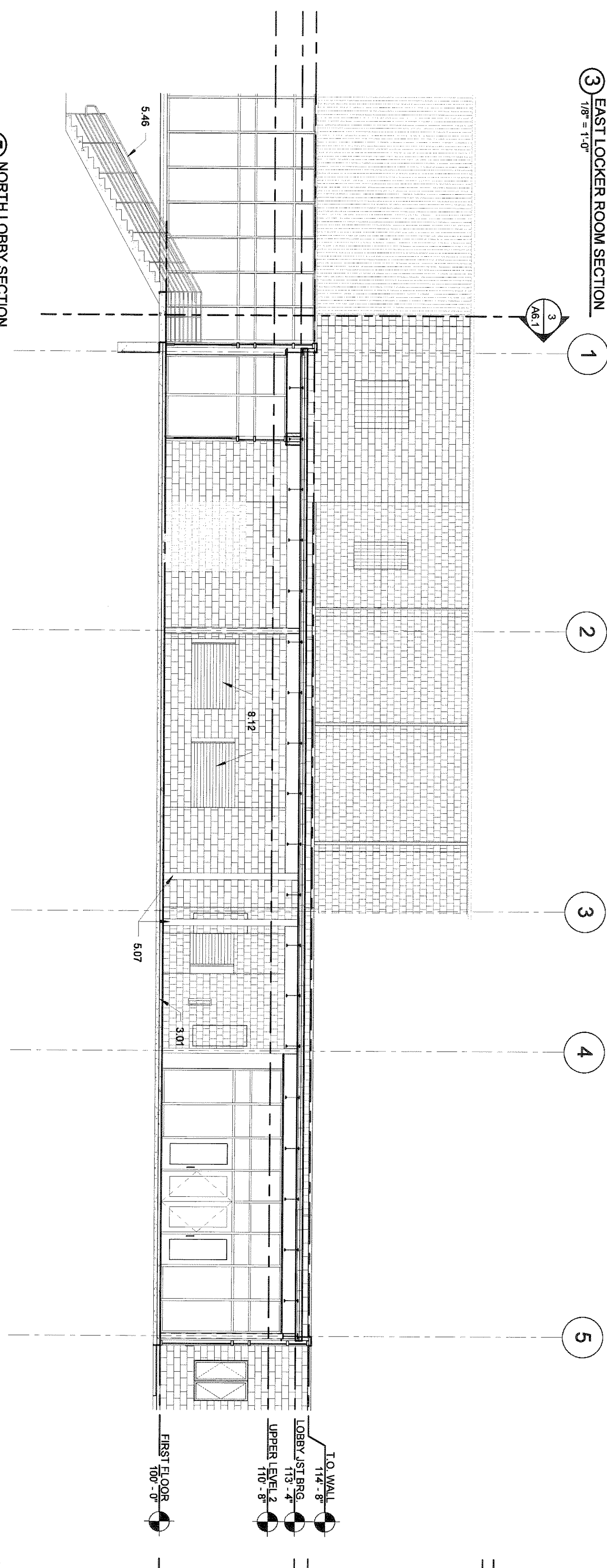
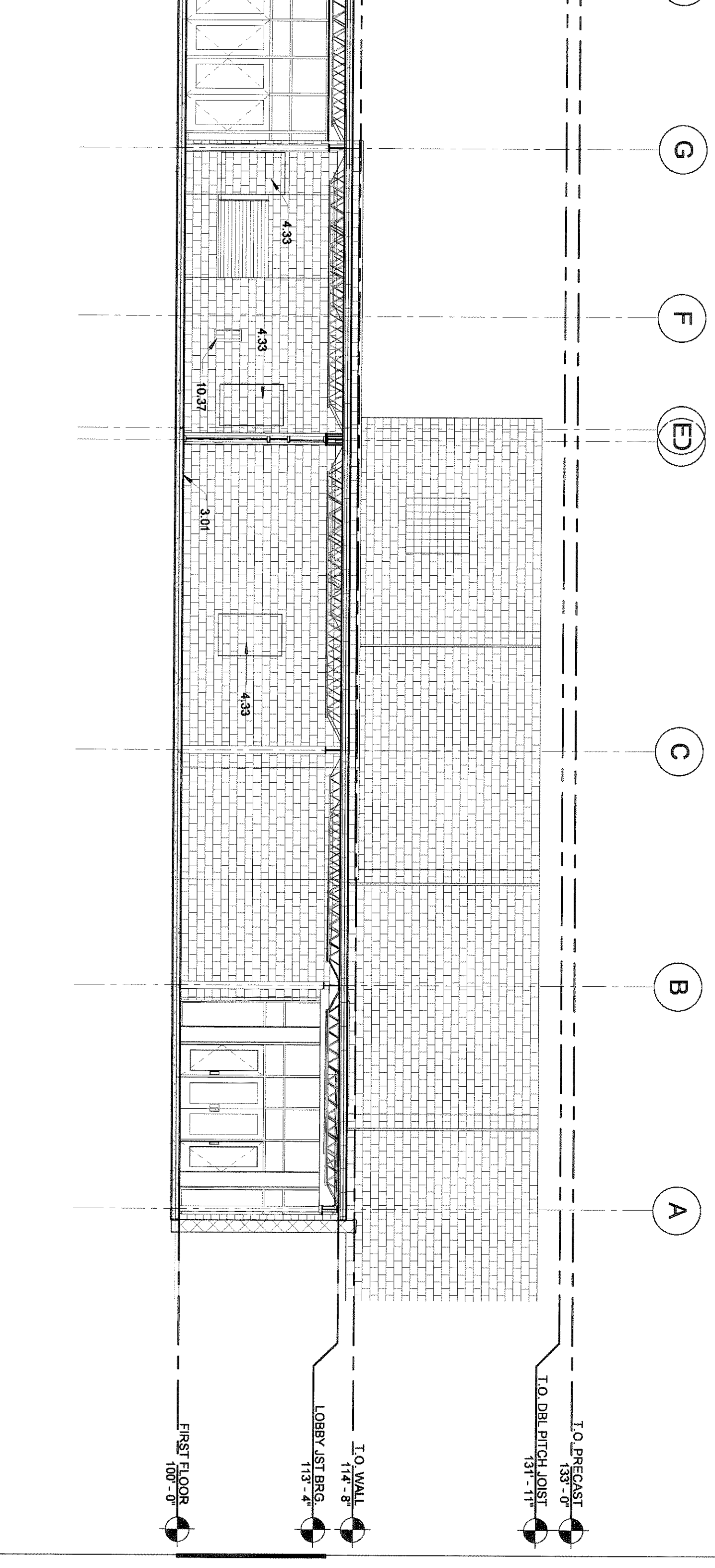
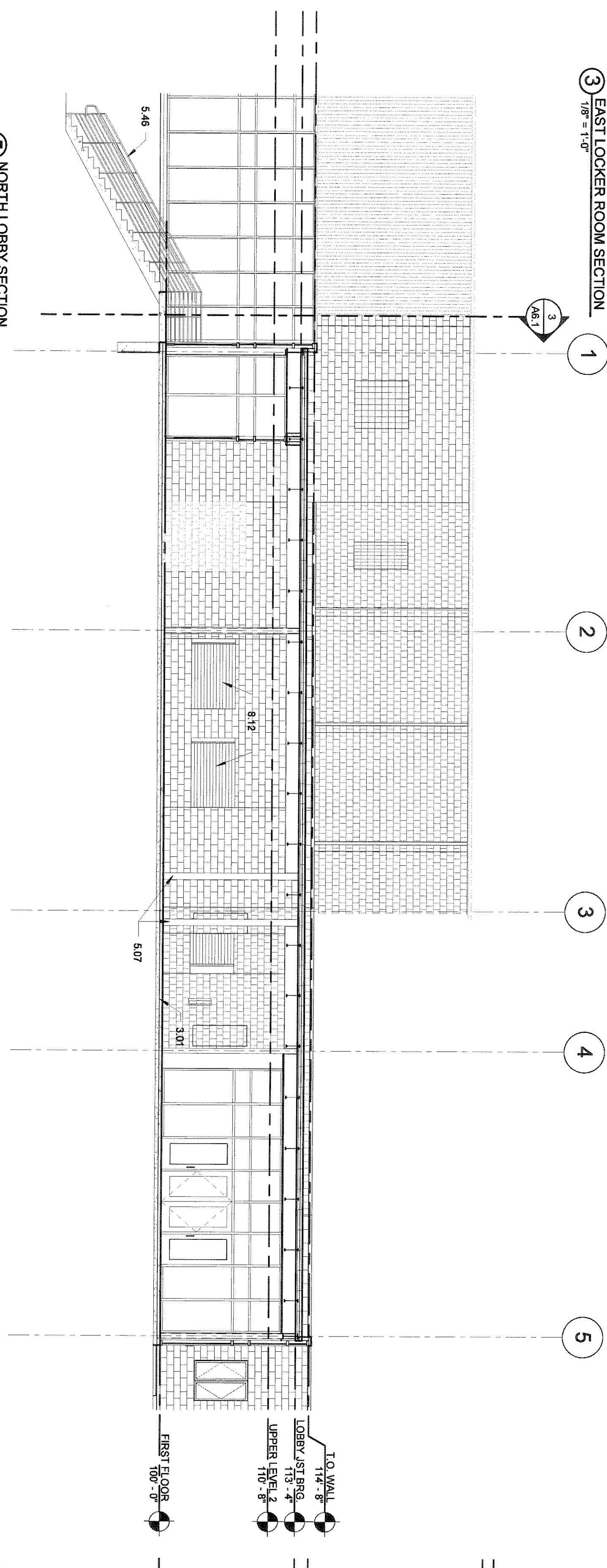
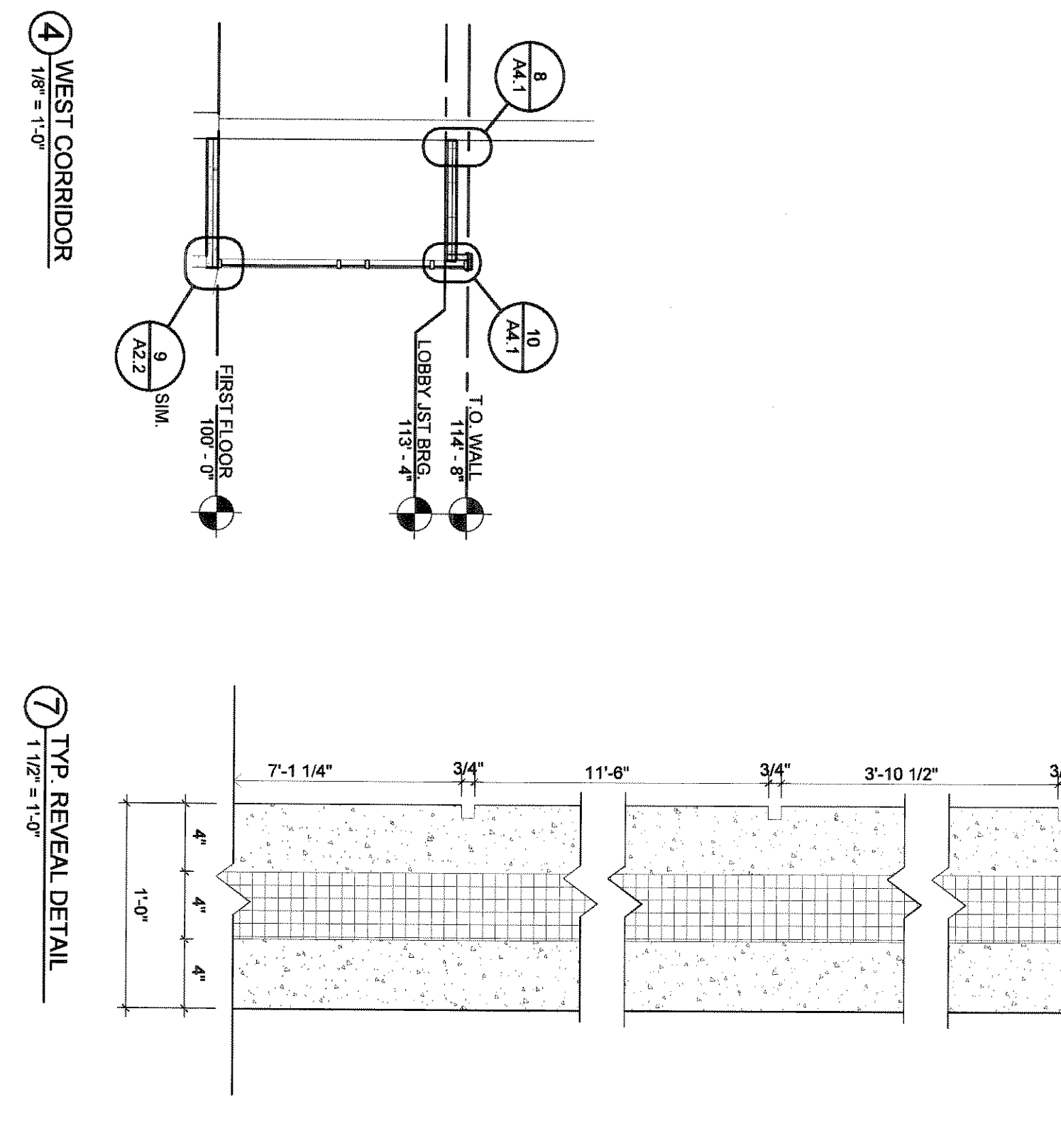
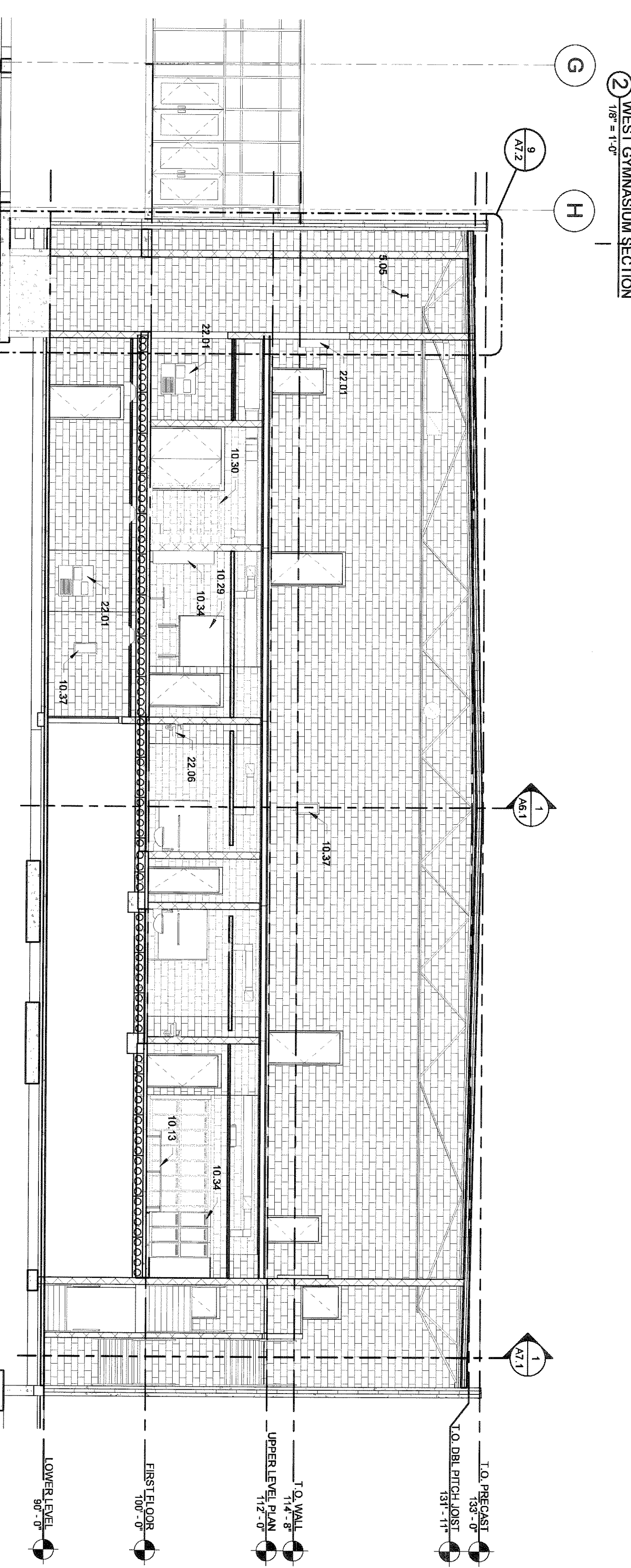
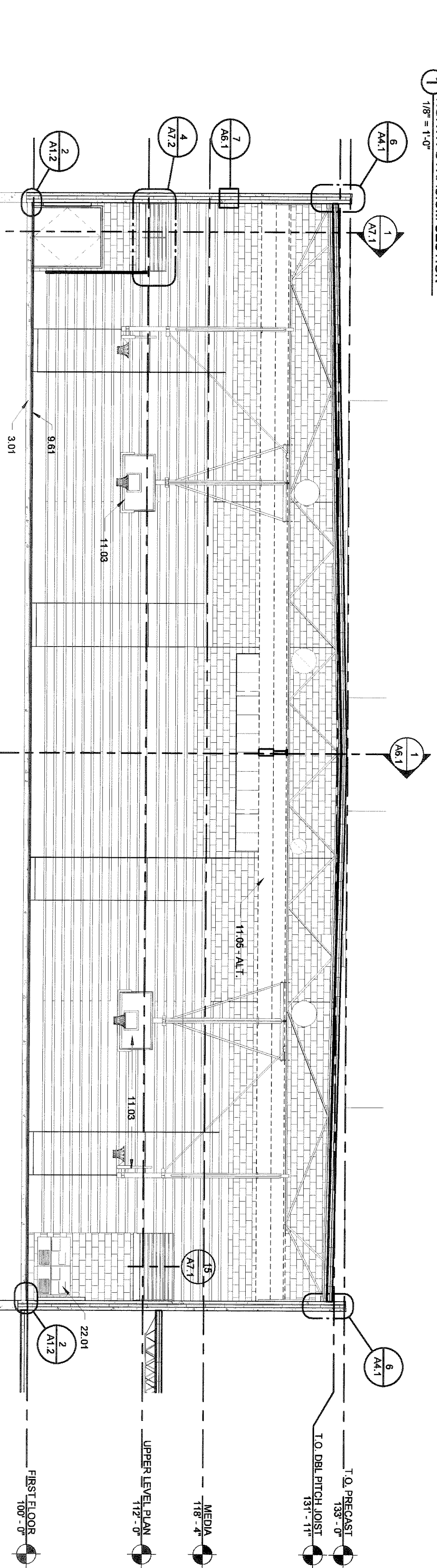
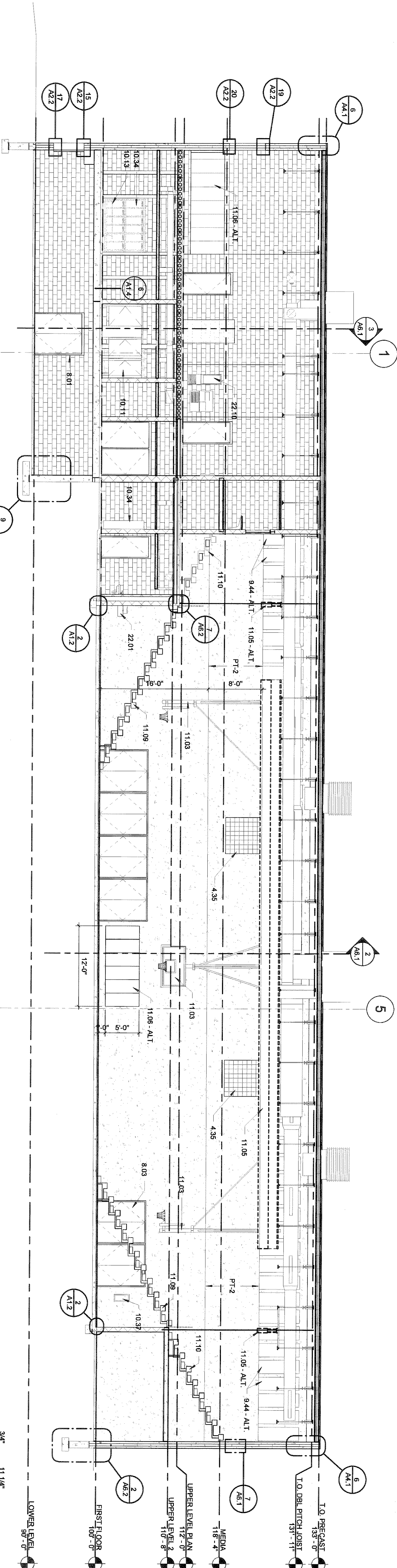
2 LOWER LEVEL CONCESSIONS
REFLECTED CEILING PLAN - ALTERNATE
1/8" = 1'-0"

KEYNOTES

- DIVISION 3 - CONCRETE
3.01 CONCRETE SLAB
3.21 PRECAST CONCRETE
3.28 PRECAST MECH.
- DIVISION 4 - MASONRY
4.30 MASONRY
4.35 GLASS BLOCK - MATCH EXISTING
- DIVISION 5 - METALS
5.05 BEAM (SEE STRUCT.)
5.46 PIPE SLEEVE
5.47 GUARDRAIL
- DIVISION 8 - OPENINGS
8.01 DOOR
8.02 DOOR
8.12 COLLING DOOR
- DIVISION 9 - FINISHES
9.44 ACoustICAL WALL PANE - ALT.
9.61 MAPLE (HARDWOOD) FLOORING
- DIVISION 10 - SPECIALTIES
10.26 GLASS PARTITION
10.13 BENCH
10.32 LOCKER
10.34 LOCKER
10.37 FIRE EXTINGUISHER CABINET w/F E - SEMI-CASESSED
- DIVISION 11 - EQUIPMENT
11.05 MECHANICAL EQUIPMENT (FORWARD FOLDING)
11.06 SAFETY WALL MAT
11.08 SAFETY WALL MAT
11.10 FIXED BLEACHERS
- DIVISION 22 - PLUMBING
22.01 ELECTRIC WATER COOLER (EWC)
22.10 SPTOWN - SEE MECHANICAL

GENERAL NOTES

2. SEE FLOOR PLAN FOR FINISH SCHEDULE.
3. SEE WALL TYPES FOR RATED ASSEMBLIES.
4. SEE DOOR AND WINDOW SCHEDULE FOR RATED OPENINGS.
6. REFER TO SPECIFICATIONS FOR FIRE PROTECTION AND PAINTING OF EXPOSED COLUMN AND BEAM STRUCTURES.
7. CONTRACTOR TO VERIFY ALL EXISTING CONDITIONS, ELEVATIONS AND DIMENSIONS.
10. PROVIDE FOR AND VERIFY LOCATION, SIZE, AND QUANTITY OF ALL EQUIPMENT PADS AS SHOWN ON ELECTRICAL AND MECHANICAL DRAWINGS. COORDINATE LOCATIONS WITH ALL POWER SECTIONS, AND DETAILS.
12. PROTECT ALL EXISTING UTILITIES.
13. VERIFY SALVAGEABLE ITEMS WITH THE OWNER.
14. SEE CIVIL, STRUCTURAL, MECHANICAL, AND ELECTRICAL DRAWINGS FOR ADDITIONAL INFORMATION RELEVANT TO DEMOLITION & PATCHING.
15. PATCH REMAINING EXISTING CONSTRUCTION, AFFECTED BY DEMOLITION, TO MATCH EXISTING U.O.N.
19. ALL WALLS TO EXTEND TO DECK UNLESS OTHERWISE NOTED ON WALL TYPES.
24. VERIFY HOSTWAY SHAFT SIZE REQUIREMENTS W/ ELEVATOR MANUFACTURER & COORDINATE.
26. SEE MECHANICAL FOR ALL FLOOR DRAIN SIZES AND LOCATIONS U.O.N. SET FLOOR DRAINS MINIMUM 1" BELOW FINISHED FLOOR. PROVIDE EVEN SLOPE FROM WALL TO DRAIN W/ A MINIMUM SLOPE OF 1/8" PER FOOT.
30. COORDINATE ALL DUCT AND SHAFT OPENING SIZES AND LOCATIONS IN WALLS AND FLOORS WITH MECHANICAL. PROVIDE ALL REQUIRED LIMITS FOR ALL OPENINGS. SEE STRUCTURAL UNITS SCHEDULE.
31. ALL DRAIN LEADERS AND DUCT DROPS ARE TO BE ENCLOSED AND FINISHED WITH ADJACENT WALL MATERIALS. COORDINATE LOCATIONS WITH MECHANICAL.
33. PROVIDE A COMPLETE RATED ENCLOSURE AT TOP AND BOTTOM OF ALL SHAFTS. PROVIDE AND INSTALL CONCRETE AND STEEL FRAMING AS REQUIRED TO BRING STRUCTURE FLOOR WITH MECHANICAL SYSTEMS.
34. PROVIDE ALL CONCRETE CURBS IN MECHANICAL ROOMS AS NOTED ON DRAWINGS.
35. SEE STRUCTURAL DRAWINGS FOR BEARING WALL AND COLUMN SIZES AND LOCATIONS.
37. WHERE AN E.W.C. OCCURS IN A ROOM FINISHED W/ CARPET OR WOOD, PROVIDE V.C.T. AND A VINYL TRANSITION STRIP IN THE RECESS BELOW THE E.W.C.
39. REVIEW ALL INTERIOR ELEVATION SHEETS FOR ACCESSORY AND EQUIPMENT INFORMATION.
40. COORDINATE DIVISION 15 DIVISION 20 KENOTED ITEMS W/ ELECTRICAL.
50. COORDINATE DIVISION 23 KENOTED ITEMS W/ MECHANICAL.
51. COORDINATE DIVISION 16 DIVISION 20 KENOTED ITEMS W/ MECHANICAL.
52. INTERIOR WALL FINISHES ARE FULL HEIGHT, U.O.N.
53. VECTOR CONNECTORS @ 8'-0" O.C. SEE PRECAST SUPPLIER FOR VERIFICATION - COORDINATE WITH ARCHITECT.



PROJECT NO. DRAWN BY
08106
DATE: 03/11/10
PROJECT: WEST CENTRAL HIGH SCHOOL
GYMNASIUM ADDITION
HARTFORD, SOUTH DAKOTA

SHEET TITLE:
BUILDING SECTIONS